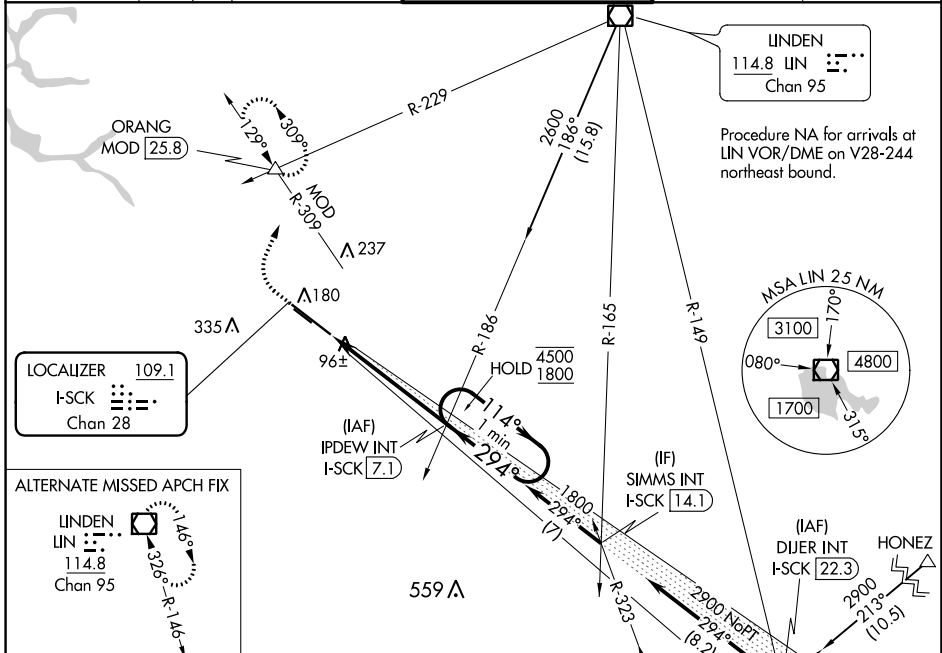


LOC/DME I-SCK 109.1 Chan 28	APP CRS 294°	Rwy Idg TDZE Apt Elev	8650 32 33
--	------------------------	-----------------------------	---------------------------------------

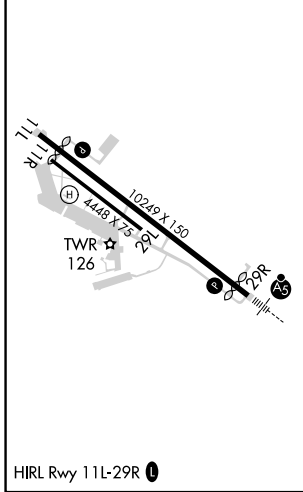
ILS RWY 29R (SA CAT II)
STOCKTON METROPOLITAN (SCK)

<p>Reduced lighting: requires specific OPSPEC, MSPEC, or LOA approval and use of autoland or HUD to touchdown. Procedure NA when tower closed.</p>	<p>MALS R</p>	<p>MISSED APPROACH: Climb to 500 then climbing right turn to 2000 on heading 010° and MOD VOR/DME R-309 to ORANG INT/MOD 25.8 DME and hold.</p>
---	----------------------	--

ATIS 118.25	NORCAL APP CON (SE-NW) 123.85 278.3 (N-SE) 125.1 363.2	STOCKTON TOWER ★ 120.3 (CTAF) 0 239.0	GND CON 121.9	UNICOM 122.95
-----------------------	--	---	-------------------------	-------------------------



ELEV 33	D	TDZE 32
---------	----------	---------



500	2000	ORANG	VGSI and ILS glidepath not coincident (VGSI Angle 3.00/TCH 71).
↑	hdg 010°	MOD R-309	One Minute Holding Pattern
<p>IPDEW INT I-SCK (7.1)</p>			<p>1800</p> <p>114° → 4500</p> <p>← 294° 1800</p> <p>← 1800</p> <p>GS 3.00° TCH 55</p>

CATEGORY	A	B	C	D
S-ILS 29R		RA 105/12	100 DA 132	

SA CATEGORY II ILS - SPECIAL AIRCREW & AIRCRAFT CERTIFICATION REQUIRED

SW-2, 20 MAY 2021 to 17 JUN 2021

SW-2, 20 MAY 2021 to 17 JUN 2021