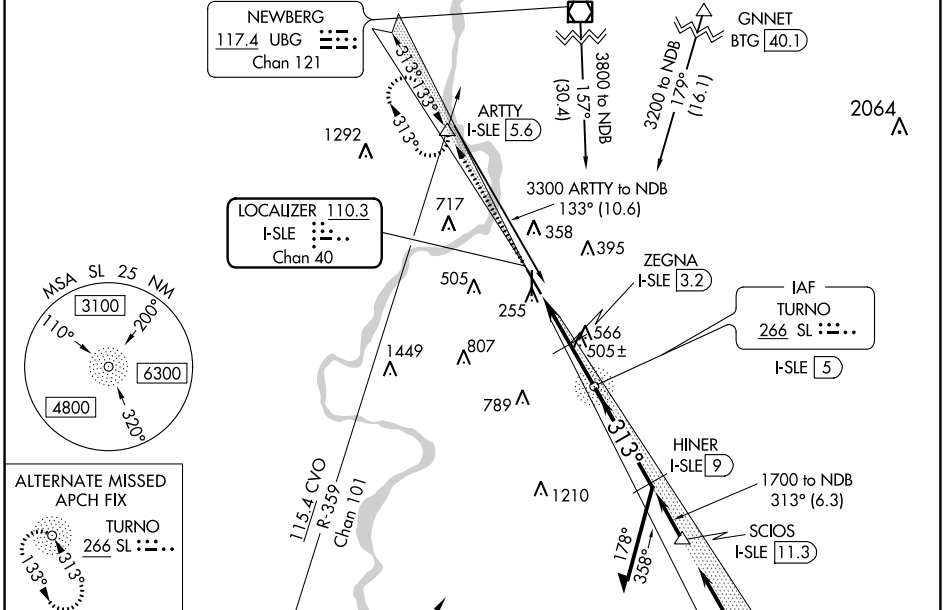


LOC/DME I-SLE 110.3 Chan 40	APP CRS 313°	Rwy Idg 5811 TDZE 213 Apt Elev 213
------------------------------------------	------------------------	---------------------------------------------------------------

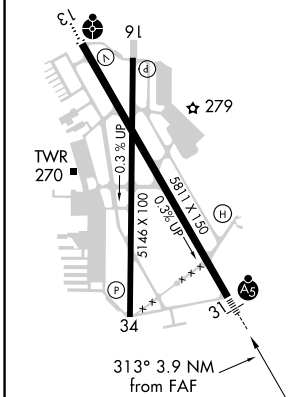
LOC Y RWY 31

MCNARY FLD (SLE)

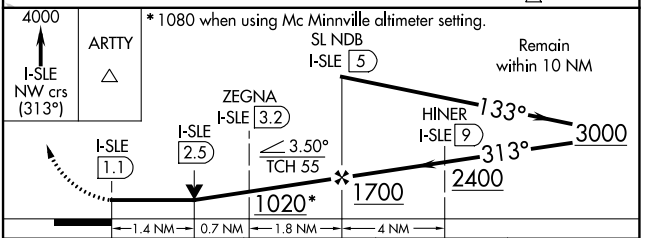
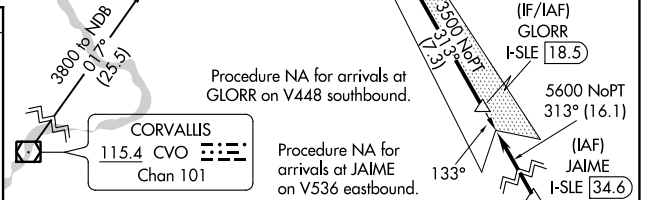
DME required. RADAR required.		MALS R		MISSED APPROACH: Climb to 4000 on I-SLE Localizer NW course (313°) to ARTTY INT/I-SLE 5.6 DME and hold, continue climb-in-hold to 4000.	
<p>When local altimeter setting not received, use Mc Minnville altimeter setting and increase all MDAs 60 feet and visibility S-LOC 31 Cat C/D 1/8 SM and Circling Cat C 1/4 SM. For inop ALS, increase S-LOC 31 Cats C and D visibility to 1/8 SM. For inop ALS when using Mc Minnville altimeter setting, increase S-LOC 31 Cats C and D visibility to 1/4 SM. VDP NA when using Mc Minnville altimeter setting.</p>					
ATIS 124.55	SEATTLE CENTER 125.8 291.7	SALEM TOWER ★ 119.1 (CTAF) 0 257.2	GND CON 121.9	UNICOM 122.95	



ELEV 213	D	TDZE 213
----------	---	----------



REIL Rwy 13, 16 and 34	HIRL Rwy 13-31	MIRL Rwy 16-34
------------------------	----------------	----------------



CATEGORY	A	B	C	D
S-LOC 31	780/24	567 (600-1/2)	780-1/4	567 (600-1/4)
CIRCLING	900-1	960-1	1060-2 1/2	1260-3
	687 (700-1)	747 (800-1)	847 (900-2 1/2)	1047 (1100-3)

NW-1, 20 MAY 2021 to 17 JUN 2021

NW-1, 20 MAY 2021 to 17 JUN 2021