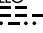

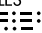


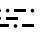
# TERKS TWO ARRIVAL

NORFOLK APP CON  
 118.9 353.7  
 KNGU ATIS  
 118.425 342.0  
 KNTU ATIS  
 317.6  
 ORF INTL ATIS  
 127.15

MONTEBELLO  
 115.3 MOL   
 Chan 100  
 N37°54.03'-W79°06.41'

HARCUM  
 108.8 HCM   
 Chan 25  
 N37°26.92'-W76°42.68'

CAPE CHARLES  
 112.2 CCV   
 Chan 59  
 N37°20.85'-W75°59.86'

FLAT ROCK  
 113.3 FAK   
 Chan 80  
 N37°31.71'-W77°49.69'

**TURBOJET VERTICAL NAVIGATION PLANNING INFORMATION**

Expect clearance to cross at 14,000'.

RUSSL  
 N37°29.82'-W77°22.14'

**TURBOJET VERTICAL NAVIGATION PLANNING INFORMATION**

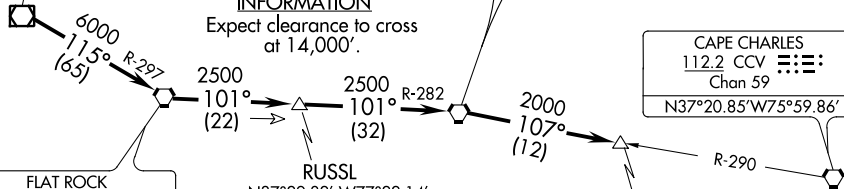
Expect clearance to cross at 16,000'.

**TURBOJET VERTICAL NAVIGATION PLANNING INFORMATION**

Expect clearance to cross 20 NM west at FL 210.

NOTE: For aircraft at or above 14,000' only.

NOTE: Chart not to scale.



NORFOLK NS (CHAMBERS FIELD)

NORFOLK INTL

HAMPTON ROADS

OCEANA NAS/APOLLO SOUCEK FIELD

SUFFOLK EXECUTIVE

CHESAPEAKE RGNL

From over MOL VOR/DME via R-115 and FAK R-297 to FAK VORTAC, then via FAK R-101 and HCM R-282 to HCM VORTAC, then via HCM R-107 and CCV R-290 to TERKS INT. Expect radar vectors to the final approach course after the TERKS INT.

# TERKS TWO ARRIVAL

NE-3, 20 MAY 2021 to 17 JUN 2021

NE-3, 20 MAY 2021 to 17 JUN 2021