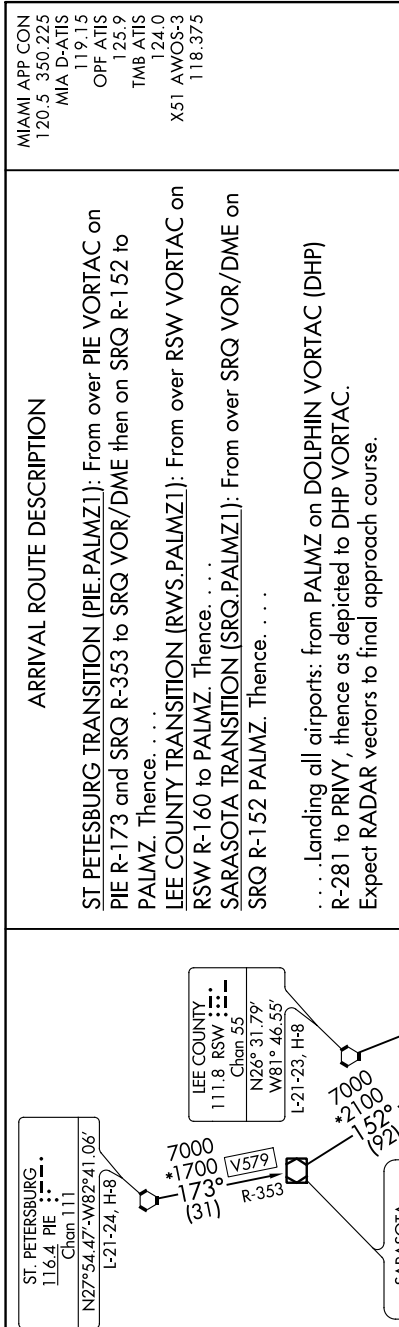


PALMZ ONE ARRIVAL

AL-257 (FAA)

MIAMI, FLORIDA

SE-3, 20 MAY 2021 to 17 JUN 2021



ARRIVAL ROUTE DESCRIPTION

ST PETESBURG TRANSITION (PIE.PALMZ1): From over PIE VORTAC on PIE R-173 and SRQ R-353 to SRQ VOR/DME then on SRQ R-152 to PALMZ. Thence.

LEE COUNTY TRANSITION (RWS.PALMZ1): From over RSW VORTAC on RSW R-160 to PALMZ. Thence.

SARASOTA TRANSITION (SRQ.PALMZ1): From over SRQ VOR/DME on SRQ R-152 PALMZ. Thence.

.Landing all airports: from PALMZ on DOLPHIN VORTAC (DHP) R-281 to PRIVY, thence as depicted to DHP VORTAC. Expect RADAR vectors to final approach course.

NOTE: RADAR required.
NOTE: DME required.

NOTE: Chart not to scale.

SE-3, 20 MAY 2021 to 17 JUN 2021

PALMZ ONE ARRIVAL

MIAMI, FLORIDA

22APR21