

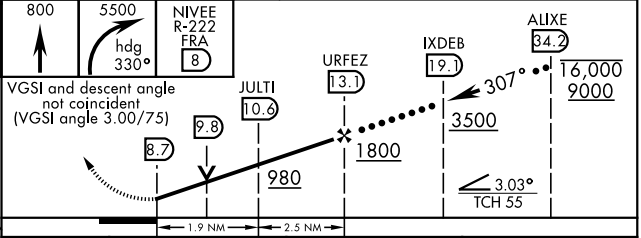
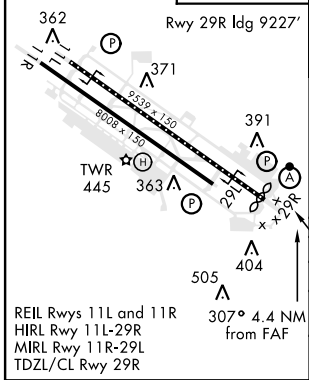
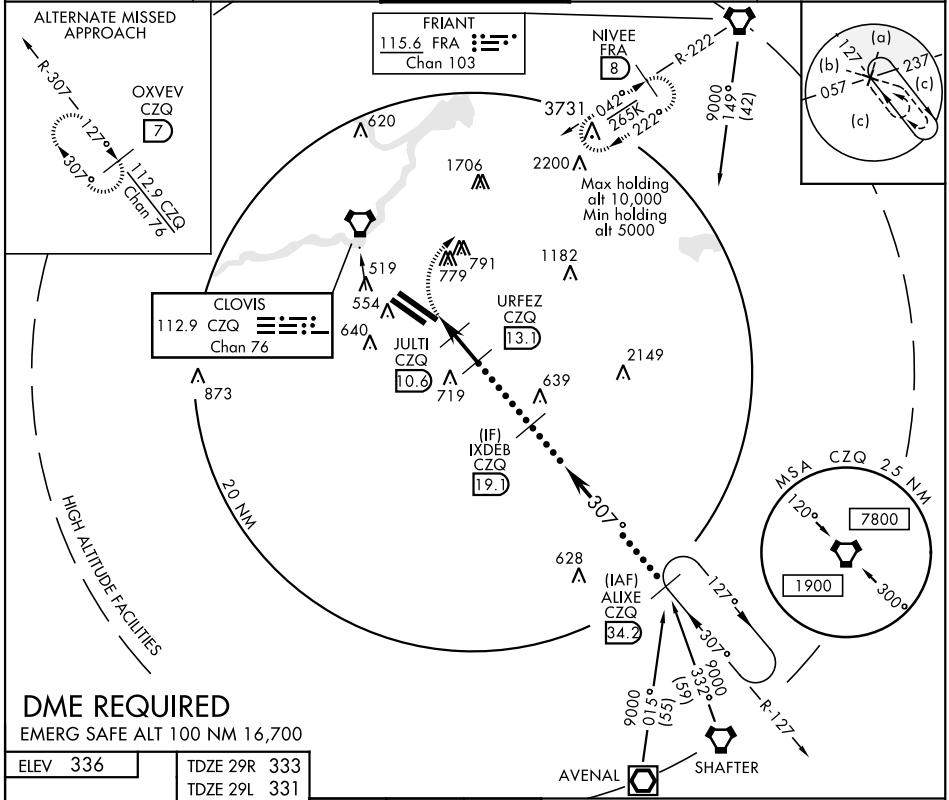
VORTAC CZQ <b>112.9</b> Chan 76	APCH CRS <b>307°</b>	Rwy Idg 29R <b>9227</b> TDZE 29R <b>333</b> Arprt Elev <b>336</b>	29L <b>8008</b> 29L <b>331</b>
---------------------------------------	-------------------------	---	-----------------------------------

JAL-162 [USAF] FRESNO YOSEMITE INTL (KFAT)

ALSF-2 MISSED APPROACH: Climb to 800 then climbing right turn to 5500 on heading 330° and FRA VORTAC R-222 to NIVEE INT/FRA 8 DME and hold, continue climb-in-hold to 5500.

\* When ALS inop, increase CAT CDE vis to 1¼ miles.

ATIS <b>121.35 273.6</b>	FRESNO APP CON <b>132.35 323.25</b>	FRESNO TOWER <b>118.2 251.1</b>	GND CON <b>121.7 348.6</b>	CLNC DEL <b>124.35 348.6</b>
-----------------------------	--	------------------------------------	-------------------------------	---------------------------------



CATEGORY	C	D	E
S-29R *	760/40	427	(500-¾)
SIDESTEP 29L	760-1½ 429 (500-1½)	760-2	429 (500-2)
CIRCLING	920-1½ 584 (600-1½)	920-2 584 (600-2)	1140-2¾ 804 (900-2¾)

SW-2, 20 MAY 2021 to 17 JUN 2021

SW-2, 20 MAY 2021 to 17 JUN 2021