


VORTAC CEC 109.0 Chan 27	APP CRS 131°	Rwy Idg 5002 TDZE 60 Apt Elev 61
---------------------------------------	------------------------	---

VOR/DME RWY 12

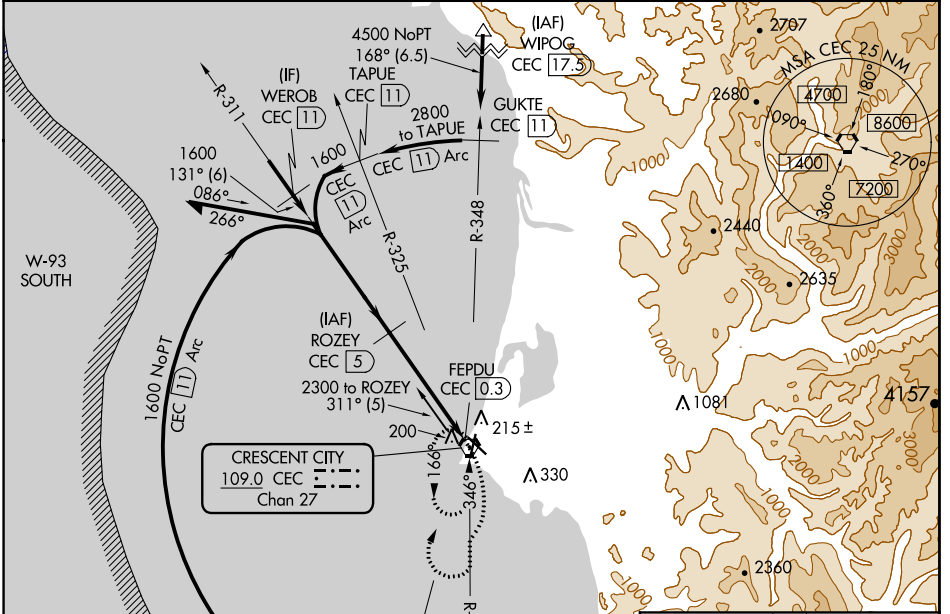
JACK MC NAMARA FIELD (CEC)

⚠ VDP NA with Brookings altimeter setting. When local altimeter setting not received, use Brookings altimeter setting and increase all MDA 100 feet; increase S-12 Cat C/D, and Circling Cat D visibility ¼ mile, and Circling Cat C visibility ½ mile. For inop MALSR, increase S-12 Cats A/B visibility to 1 mile. Cats C/D visibility to 1 ½ mile. For inop MALSR when using Brookings altimeter setting, increase S-12 Cats A/B visibility to 1 mile, Cats C/D visibility to 1 ½ mile. Night Landing: Rwy 18, 30 NA. Night Landing: Rwy 36 operational VGSJ required, remain on or above VGSJ glidepath until threshold.

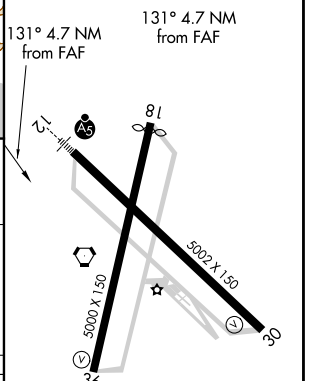
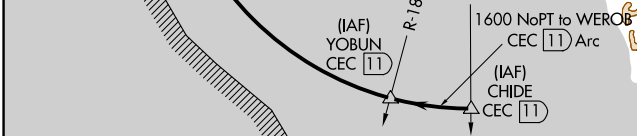
MALSR 

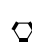


MISSED APPROACH: Climbing right turn to 3000 on CEC VORTAC R-166 then right turn direct CEC VORTAC and hold.

ASOS 119.925	SEATTLE CENTER 124.85 306.3	UNICOM 122.8 (CTAF) 0
------------------------	---------------------------------------	---------------------------------



ELEV 61	TDZE 60
---------	---------



Remain within 10 NM	ROZEY CEC 5	3000	CEC
1600	131°	CEC R-166	
1600	311°	CEC 1.4	
2.98° TCH 50		FEPDU CEC 0.3	
3.6 NM		1.2 NM	

CATEGORY	A	B	C	D
S-12	480-¾	420 (500-¾)	480-1	420 (500-1)
C CIRCLING	540-1	479 (500-1)	640-1½ 579 (600-1½)	640-2 579 (600-2)

HIRL Rwy 12-30 0
REIL Rws 18, 30 and 36 0
MIRL Rwy 18-36 0

SW-2, 20 MAY 2021 to 17 JUN 2021

SW-2, 20 MAY 2021 to 17 JUN 2021