

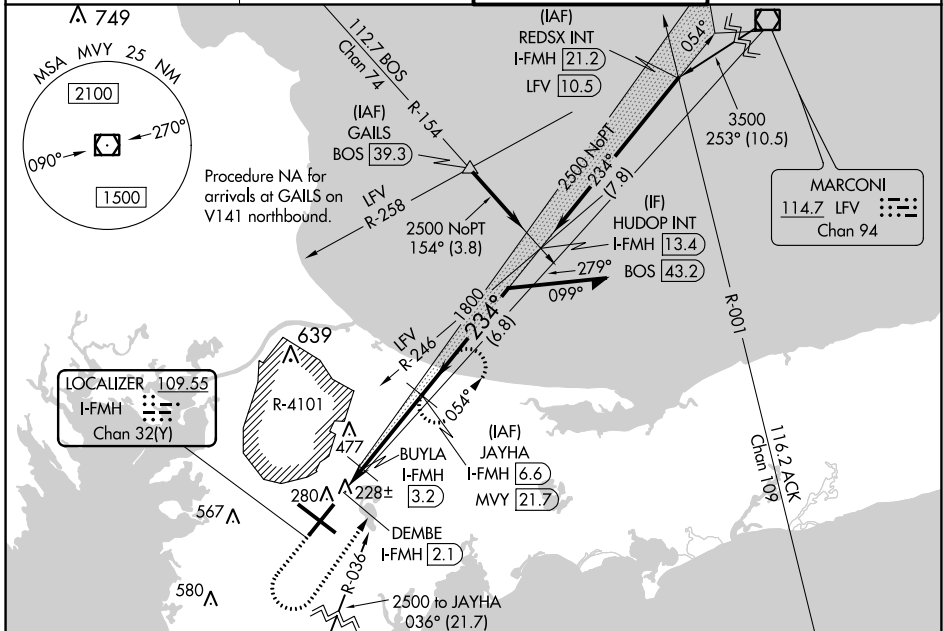
LOC/DME I-FMH 109.55 Chan 32(Y)	APP CRS 234°	Rwy Idg TDZE 126 Apt Elev 130	8000
-----------------------------------------------------	------------------------	---------------------------------------------------	-------------

COPTER ILS Y or LOC Y RWY 23

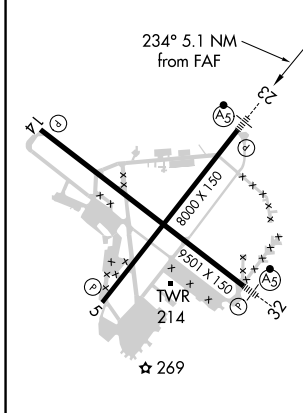
CAPE COD COAST GUARD AIR STATION (F'MH)

DME required.	MALSR 	MISSED APPROACH: Climb to 1400 then climbing left turn heading 050° and MVY VOR/DME R-036 to 3000 direct JAYHA and hold.
For inop ALS increase, H-ILS 23 and H-LOC 23 visibility to RVR 2400. United States Coast Guard only.		

ATIS 120.475 236.825	BOSTON APP CON ★ 118.2 284.6	COAST GUARD TOWER 128.425 291.1	GND CON 124.15 275.8
--------------------------------	----------------------------------------	-------------------------------------------	--------------------------------



ELEV 130	TDZE 126
----------	----------



REIL Rws 5 and 14
HIRL Rws 5-23 and 14-32

1400	3000	MVY R-036	JAYHA I-FMH 6.6	JAYHA I-FMH 6.6	Remain within 5 NM
hdg 050°		* LOC only.		BUYLA I-FMH 3.2	1800 054°
		DEMBE I-FMH 2.1	1800	234°	1800
			720*		GS 3.00° HCH 53
		0.6	1.1 NM	3.4 NM	

CATEGORY	COPTER	
H-ILS 23	226/12	100 (100-¼)
H-LOC 23	480/12	354 (400-¼)

NE-1, 22 APR 2021 to 20 MAY 2021

NE-1, 22 APR 2021 to 20 MAY 2021