

APP CRS	Rwy Idg	N/A
<b>239°</b>	TDZE	N/A
	Apt Elev	<b>1395</b>

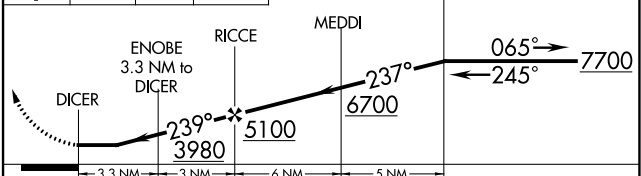
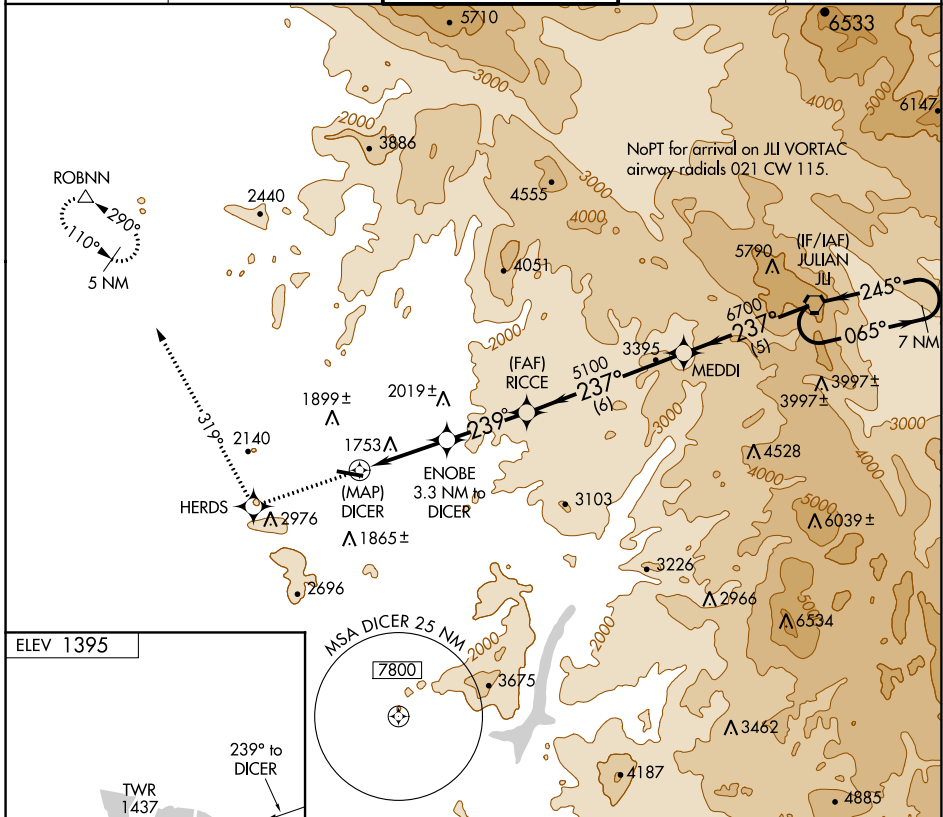
# RNAV (GPS)-B

RAMONA (R.NM)

**▽** DME/DME RNP-0.3 NA.  
**▲** Circling NA north of Rwy 9-27.  
 When local altimeter setting not received, use Gillespie Field altimeter setting and increase all MDA 180 feet.

MISSED APPROACH: Climb to 5000 direct HERDS and via track 319° to ROBNN and hold.

ATIS <b>132.025</b>	SOCAL APP CON <b>132.2 269.1</b>	RAMONA TOWER ★ <b>119.875 (CTAF) 0</b>	GND CON <b>121.65</b>	UNICOM <b>122.95</b>
------------------------	-------------------------------------	---	--------------------------	-------------------------



REIL Rwy 27 0	MIRL Rwy 9-27 0			
CATEGORY	A	B	C	D
CIRCLING	2780-1¼ 1385 (1400-1¼)	2780-1½ 1385 (1400-1½)	2780-3 1385 (1400-3)	NA

SW-3, 22 APR 2021 to 20 MAY 2021

SW-3, 22 APR 2021 to 20 MAY 2021