

(INDIE7.INDIE) 21056

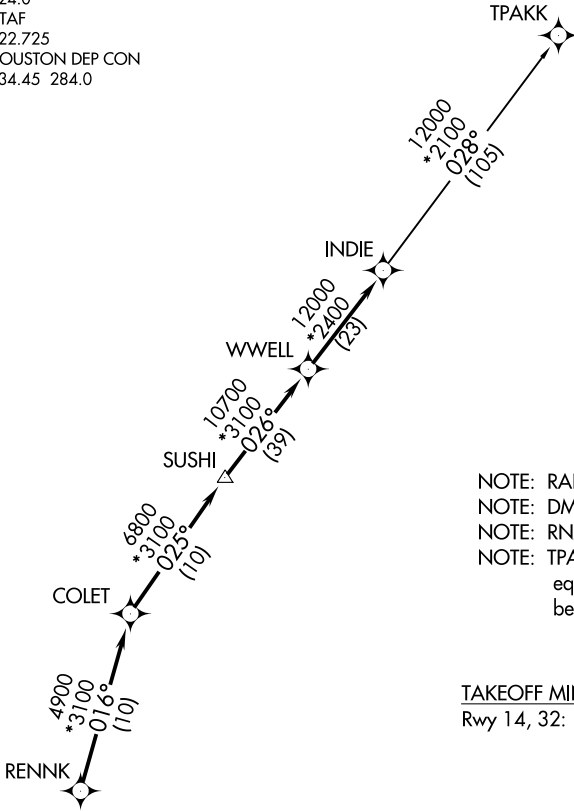
AL-6460 (FAA)

PEARLAND RGNL (LVJ)
HOUSTON, TEXAS

INDIE SEVEN DEPARTURE (RNAV)

ASOS
118.525
CLNC DEL
124.0
CTAF
122.725
HOUSTON DEP CON
134.45 284.0

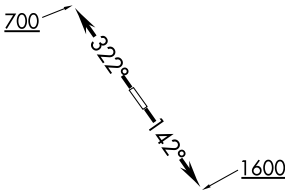
**TOP ALTITUDE:
ASSIGNED BY ATC**



- NOTE: RADAR required.
- NOTE: DME/DME/IRU or GPS required.
- NOTE: RNAV 1.
- NOTE: TPAKK TRANSITION: For non GPS equipped aircraft TNV DME must be operational.

TAKEOFF MINIMUMS

Rwy 14, 32: Standard with minimum climb of 500' per NM to 560.



DEPARTURE ROUTE DESCRIPTION

TAKEOFF RUNWAY 14: Climb heading 142° to 1600 for RADAR vectors to RENNK, thence . . .

TAKEOFF RUNWAY 32: Climb heading 322° to 700 for RADAR vectors to RENNK, thence . . .

. . . on track 016° to COLET, then on track 025° to SUSHI, then on track 026° to WWELL, then on track 026° to INDIE, then on (transition). Maintain ATC assigned altitude. Expect filed altitude 10 minutes after departure.

TPAKK TRANSITION (INDIE7.TPAKK)

NOTE: Chart not to scale.

INDIE SEVEN DEPARTURE (RNAV)

(INDIE7.INDIE) 25APR19

HOUSTON, TEXAS
PEARLAND RGNL (LVJ)

SC-5, 22 APR 2021 to 20 MAY 2021

SC-5, 22 APR 2021 to 20 MAY 2021