

(STYCK7.STYCK) 19115

AL-6453 (FAA)

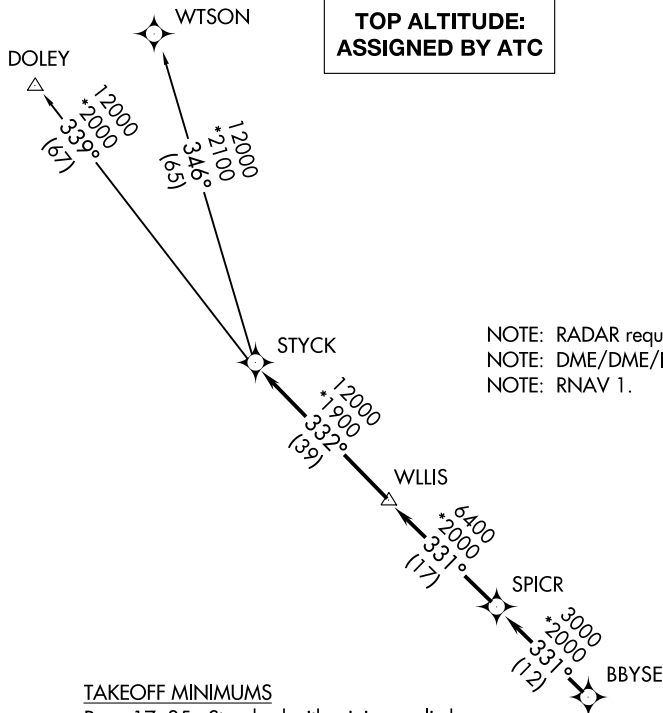
TEXAS GULF COAST RGNL (L.B.X)

STYCK SEVEN DEPARTURE (RNAV)

ANGLETON/LAKE JACKSON, TEXAS

**TOP ALTITUDE:
ASSIGNED BY ATC**

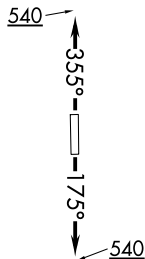
ASOS
119.925
CLNC DEL
125.2
CTAF
123.0
HOUSTON DEP CON
134.45 284.0



NOTE: RADAR required.
 NOTE: DME/DME/IRU or GPS required.
 NOTE: RNAV 1.

TAKEOFF MINIMUMS

Rwys 17, 35: Standard with minimum climb of 500' per NM to 540.



NOTE: Chart not to scale.

DEPARTURE ROUTE DESCRIPTION

TAKEOFF RWY 17: Climb heading 175° to 540 for RADAR vectors to BBYSE, thence. . . .

TAKEOFF RWY 35: Climb heading 355° to 540 for RADAR vectors to BBYSE, thence. . . .

. . . .on track 331° to SPICR, then on track 331° to WLLIS, then on track 332° to STYCK, then on (transition). Maintain ATC assigned altitude. Expect filed altitude 10 minutes after departure.

DOLEY TRANSITION (STYCK7.DOLEY)

WTSON TRANSITION (STYCK7.WTSON)

STYCK SEVEN DEPARTURE (RNAV)

(STYCK7.STYCK) 25APR19

ANGLETON/LAKE JACKSON, TEXAS

TEXAS GULF COAST RGNL (L.B.X)

SC-5, 22 APR 2021 to 20 MAY 2021

SC-5, 22 APR 2021 to 20 MAY 2021