

(LURIC7.LURIC) 19115

AL-6453 (FAA)

TEXAS GULF COAST RGNL (L.B.X)

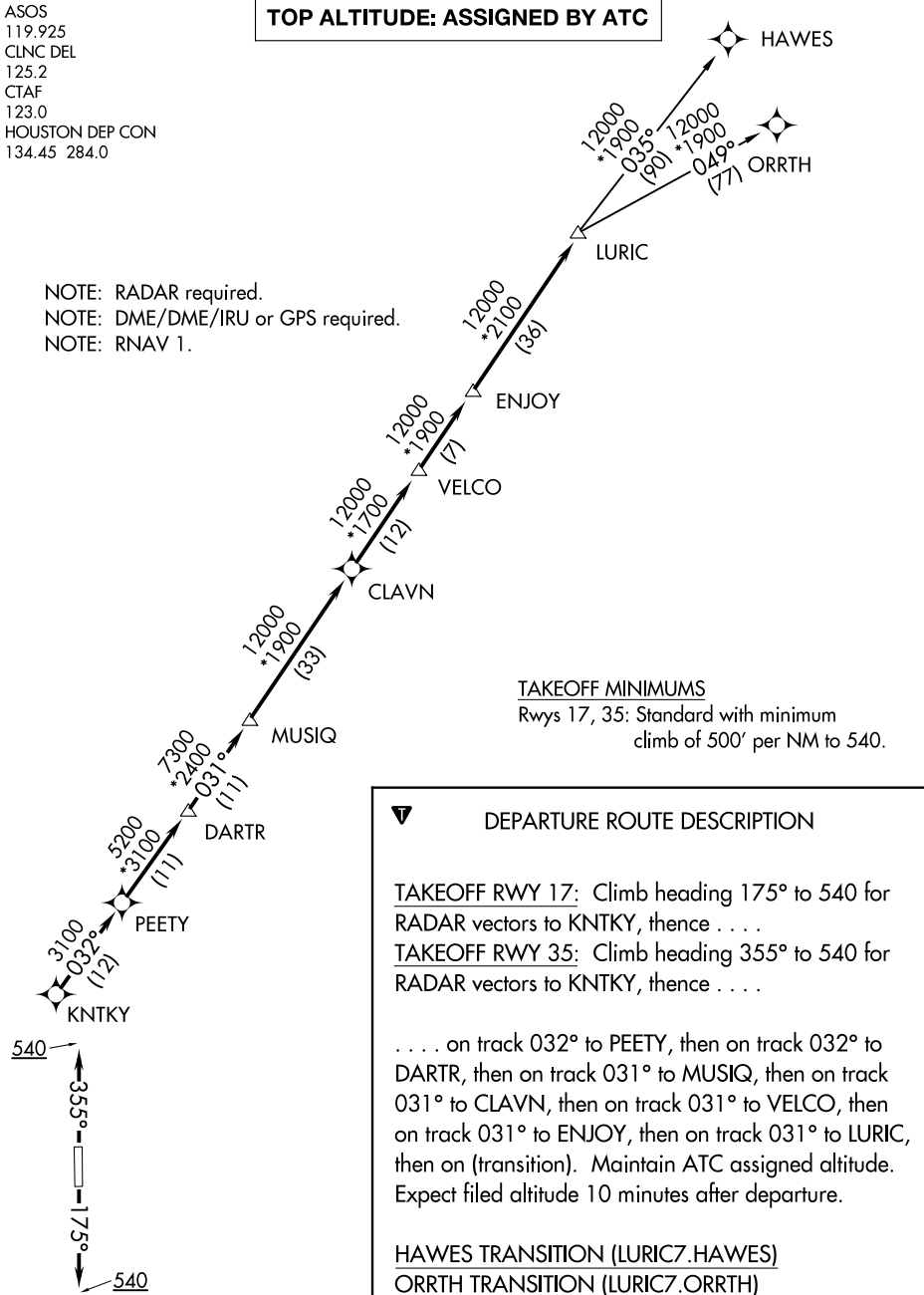
LURIC SEVEN DEPARTURE (RNAV)

ANGLETON/LAKE JACKSON, TEXAS

ASOS
119.925
CLNC DEL
125.2
CTAF
123.0
HOUSTON DEP CON
134.45 284.0

TOP ALTITUDE: ASSIGNED BY ATC

NOTE: RADAR required.
NOTE: DME/DME/IRU or GPS required.
NOTE: RNAV 1.



TAKEOFF MINIMUMS

Rwys 17, 35: Standard with minimum climb of 500' per NM to 540.

DEPARTURE ROUTE DESCRIPTION

TAKEOFF RWY 17: Climb heading 175° to 540 for RADAR vectors to KNTKY, thence

TAKEOFF RWY 35: Climb heading 355° to 540 for RADAR vectors to KNTKY, thence

. . . . on track 032° to PEETY, then on track 032° to DARTR, then on track 031° to MUSIQ, then on track 031° to CLAVN, then on track 031° to VELCO, then on track 031° to ENJOY, then on track 031° to LURIC, then on (transition). Maintain ATC assigned altitude. Expect filed altitude 10 minutes after departure.

HAWES TRANSITION (LURIC7.HAWES)

ORRTH TRANSITION (LURIC7.ORRTH)

NOTE: Chart not to scale.

LURIC SEVEN DEPARTURE (RNAV)

(LURIC7.LURIC) 25APR19

ANGLETON/LAKE JACKSON, TEXAS

TEXAS GULF COAST RGNL (L.B.X)

SC-5, 22 APR 2021 to 20 MAY 2021

SC-5, 22 APR 2021 to 20 MAY 2021