

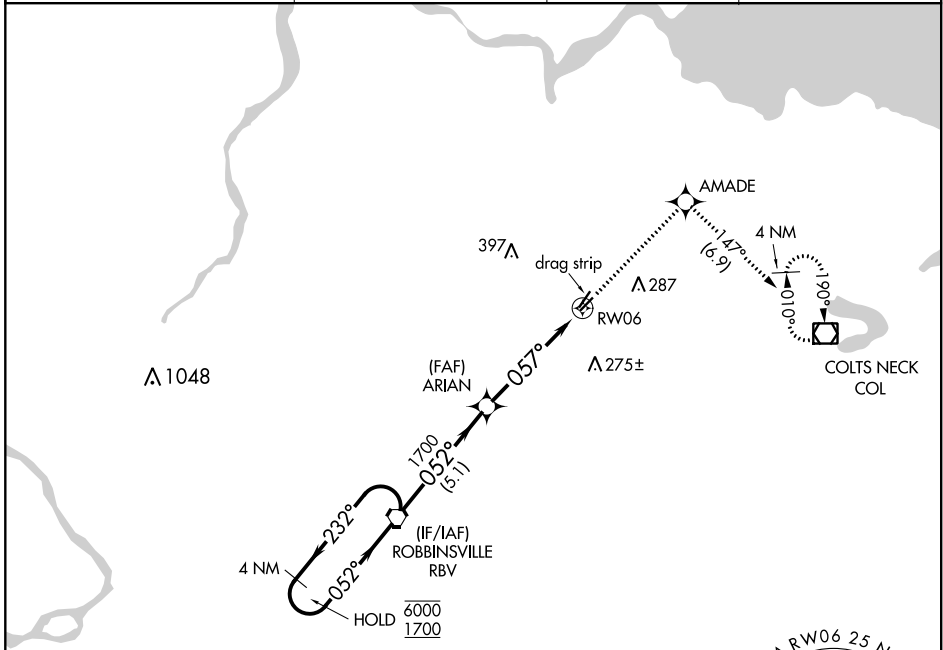
APP CRS	Rwy Idg	2994
057°	TDZE	87
	Apt Elev	87

RNAV (GPS) RWY 6

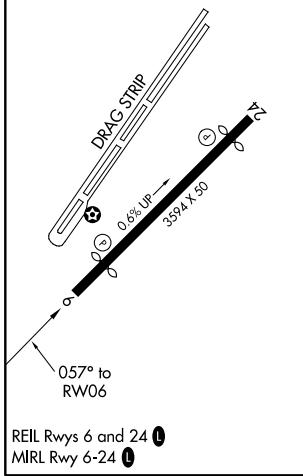
OLD BRIDGE (3N6)

RNP APCH.	Procedure NA at night. Rwy 6 helicopter visibility reduction below 1 SM NA. Use Belmar/Farmingdale altimeter setting; when not received, use Wrightstown altimeter setting and increase all MDA 20 feet.	MISSED APPROACH: Climb to 2000 direct AMADE and on track 147° to COL VOR/DME and hold.
Procedure NA at night. Use Belmar/Farmingdale altimeter setting; when not received, use Wrightstown altimeter setting and increase all MDA 20 feet.		

BLM AWOS-3PT 121.625	MC GUIRE APP CON 126.475 363.8	GCO 121.725	UNICOM 123.075 (CTAF)
--------------------------------	--	-----------------------	---------------------------------



ELEV 87	TDZE 87
----------------	----------------



REIL Rwy 6 and 24
MIRL Rwy 6-24

NoPT for arrival on RBV VORTAC airway radials 238 CW 289.

MSA RW06 2.5 NM
2900

Visual Segment - Obstacles.				2000	AMADE	tr 147°	COL
4 NM Holding Pattern							
RBV VORTAC ARIAN RW06							
6000 ← 232° 1700 ← 052° → 052° → 1700 5.1 NM 4.9 NM							
CATEGORY	A	B	C	D			
LNAV MDA	660-1 573 (600-1)			NA			

NE-2, 22 APR 2021 to 20 MAY 2021

NE-2, 22 APR 2021 to 20 MAY 2021