

WAAS CH 65720 W15A	APP CRS 152°	Rwy Idg 5100 TDZE 58 Apt Elev 58
--	------------------------	---

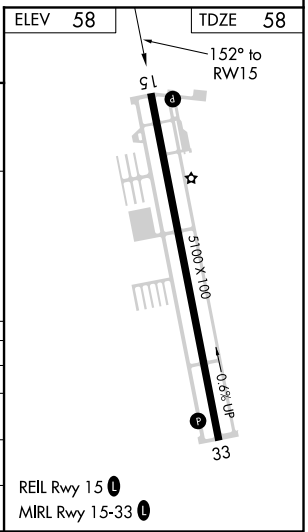
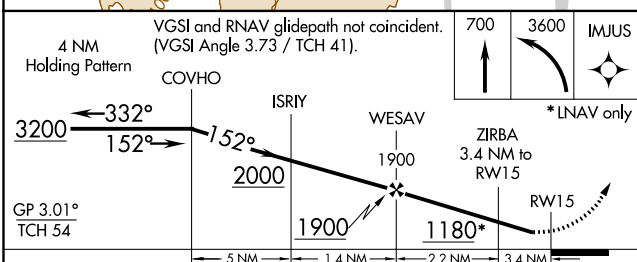
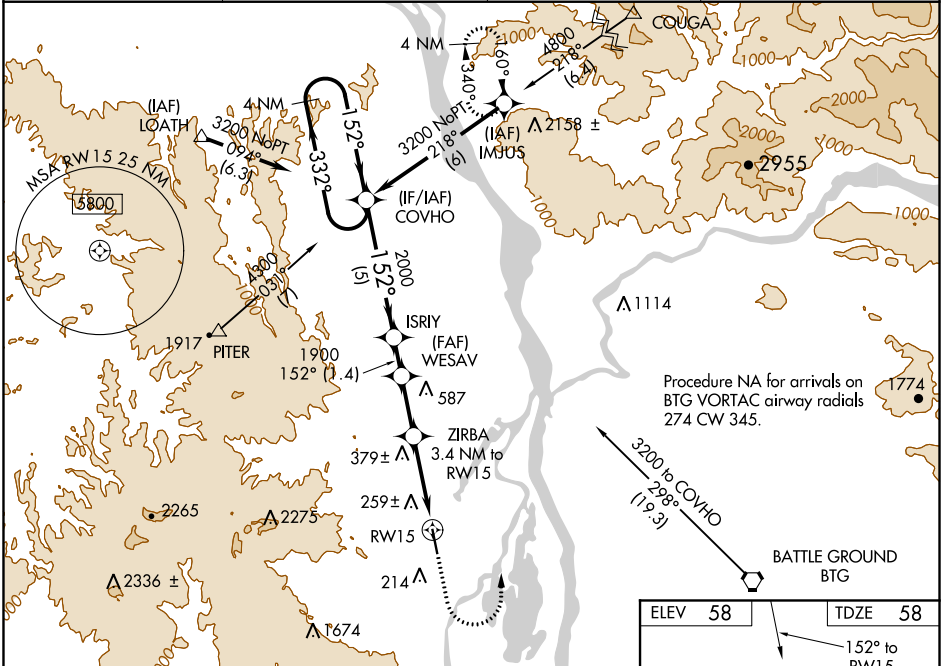
RNAV (GPS) RWY 15

SCAPPOOSE INDUSTRIAL AIRPARK (SPB)

⚠ Circling NA west of Rwy 15-33. DME/DME RNP-0.3 NA. Helicopter visibility reduction below 1 SM NA.
⚠ When VGSI inop, Straight in and Circling to Rwy 15 NA at night. When local altimeter setting not received, use Portland Intl altimeter setting and increase all DA/MDA 40 feet and increase LNAV/VNAV all Cats visibility 1/8 mile. Baro-VNAV NA when using Portland Intl altimeter setting. For uncompensated Baro-VNAV systems, LNAV/VNAV NA below -15°C (5°F) or above 42°C (107°F).

MISSED APPROACH: Climb to 700 then climbing left turn to 3600 direct IMJUS and hold.

ASOS 135.875	PORTLAND APP CON 124.35 299.2	CLNC DEL 121.65	UNICOM 122.8 (CTAF) 0
------------------------	---	---------------------------	--



CATEGORY	A	B	C	D
LPV DA		350-1	292 (300-1)	
LNAV/VNAV DA		580-1 3/4	522 (600-1 3/4)	
LNAV MDA	640-1	582 (600-1)	640-1 3/4	582 (600-1 3/4)
CIRCLING	640-1	582 (600-1)	640-1 3/4	640-2
			582 (600-1 3/4)	582 (600-2)

NW-1, 22 APR 2021 to 20 MAY 2021

NW-1, 22 APR 2021 to 20 MAY 2021