

APP CRS	Rwy Idg	4842
173°	TDZE	651
	Apt Elev	658

RNAV (GPS) RWY 17

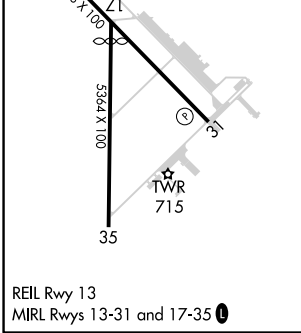
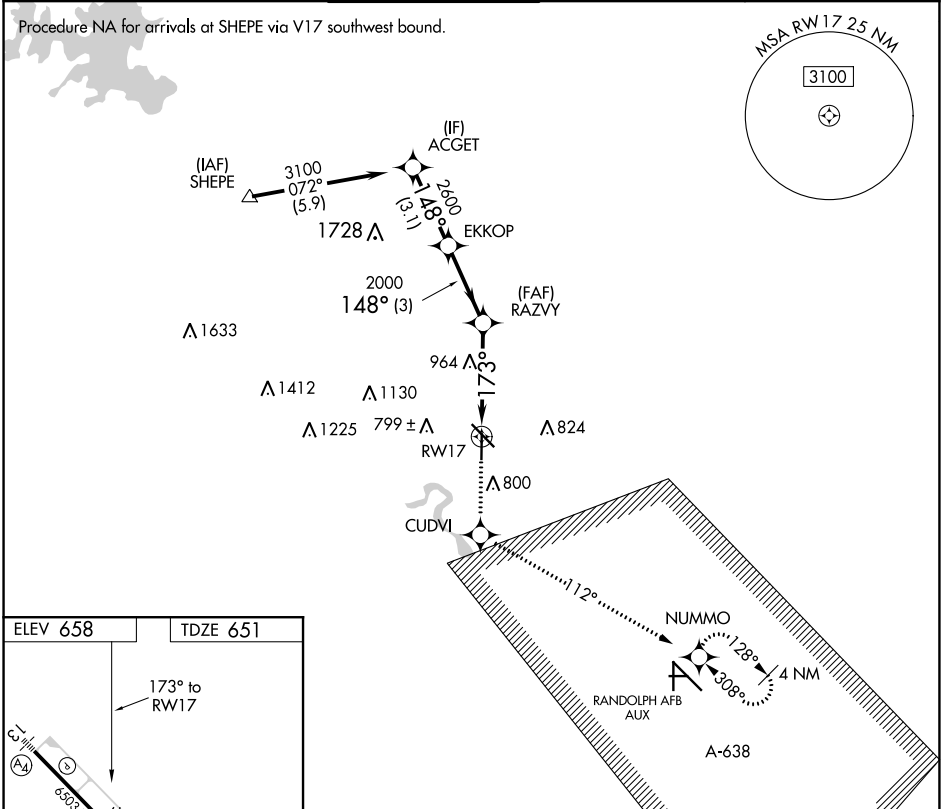
NEW BRAUNFELS RGNL (BAZ)

RNP APCH.

▼ When local altimeter setting not received, use San Marcos Rgnl altimeter setting and increase all MDAs 60 feet and visibility Cat C ¼ SM. VDP NA when using San Marcos Rgnl altimeter setting.

MISSED APPROACH: Climb to 3500 direct CUDVI and via 112° track to NUMMO and hold, continue climb-in-hold to 3500.

ATIS	SAN ANTONIO APP CON	NEW BRAUNFELS TOWER ★	GND CON	CLNC DEL	UNICOM	CTAF
119.325	124.45 335.625	127.05 285.4	120.175	134.75	122.7	127.05 ①



3500	CUDVI	NUMMO	ACGET
↑	✧	✧	
	Ir 112°		
		RAZVY	EKKOP
	1.6 NM to RW17	2000	2600
	TCH 45		3100
	173°		148°
	3.03°		
	1.6 NM	2.5 NM	3 NM
			3.1 NM
CATEGORY	A	B	C
LNAV MDA	1220-1	569 (600-1)	1220-1½ 569 (600-1½)
			1220-1¾ 569 (600-1¾)

Procedure Turn NA

SC-3, 22 APR 2021 to 20 MAY 2021

SC-3, 22 APR 2021 to 20 MAY 2021