

WAAS CH 63116 W13A	APP CRS 126°	Rwy Idg TDZE Apt Elev	5425 620 620
--	------------------------	-----------------------------	---

RNAV (GPS) RWY 13

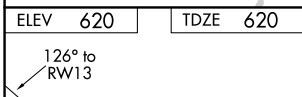
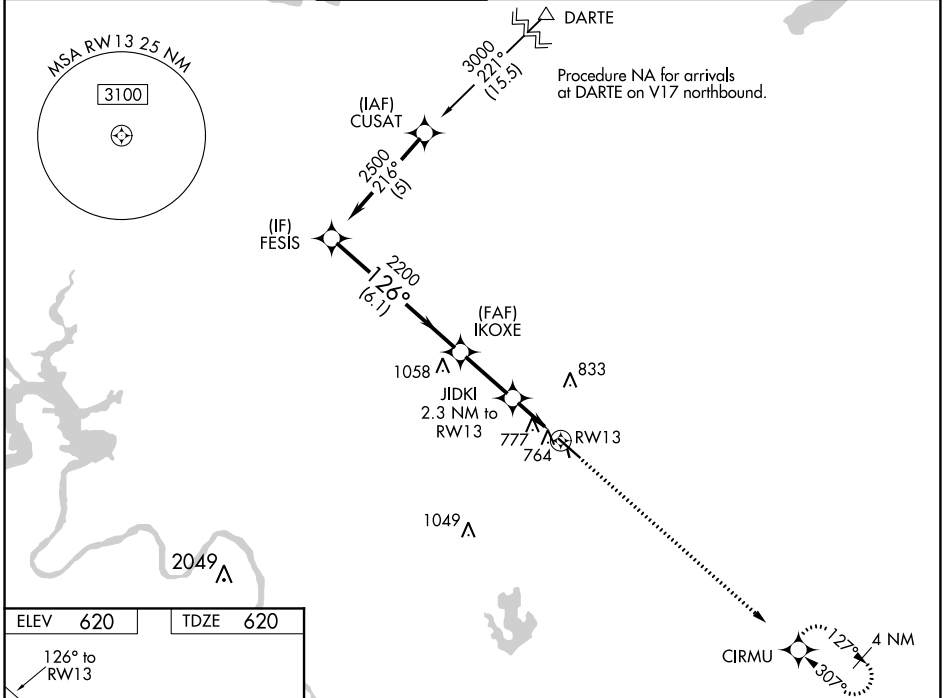
AUSTIN EXEC (EDC)

RNP APCH.

⚠ Baro-VNAV NA when using Austin-Bergstrom Intl altimeter setting. For uncompensated Baro-VNAV systems, LNAV/VNAV NA below -16°C (4°F) or above 47°C (116°F). Visibility reduction by helicopters NA. When local altimeter setting not received, use Austin-Bergstrom Intl altimeter setting: increase LPV DA to 912 feet, increase LNAV/VNAV DA to 1168 feet; increase all MDA 60 feet. VDP NA with Austin-Bergstrom Intl altimeter setting. Circling NA to Rwy 16 and 34.

MISSED APPROACH:
Climb to 2100 direct CIRMU and hold.

AWOS-3 118.825	AUSTIN APP CON 127.225 317.65	EXECUTIVE TOWER* 120.3 (CTAF) 0	GND CON 119.45	CLNC DEL 126.025 (When twr closed)	UNICOM 122.975
--------------------------	---	---	--------------------------	---	--------------------------



ELEV 620	TDZE 620
----------	----------

MIRL Rwy 13-31
REIL Rwy 13 and 31

	FESIS	IKOXE	JIDKI	RWY 13	CIRMU
	2500	2200	2200	2100	2100
Procedure	Turn NA				
GP	3.00°				
TCH	40				
	6.1 NM	2.5 NM	1 NM	1.3 NM	
CATEGORY	A	B	C	D	
LPV DA		870-1	250 (300-1)		
LNAV/VNAV DA		1126-1¾	506 (600-1¾)		
LNAV MDA	1080-1	460 (500-1)	1080-1⅝ 460 (500-1⅝)	1080-1½ 460 (500-1½)	
C CIRCLING	1140-1 520 (600-1)	1160-1 540 (600-1)	1160-1½ 540 (600-1½)	1220-2 600 (600-2)	

SC-3, 22 APR 2021 to 20 MAY 2021

SC-3, 22 APR 2021 to 20 MAY 2021