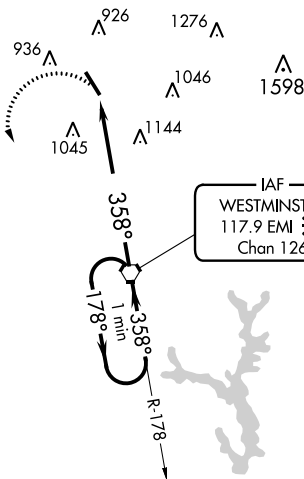
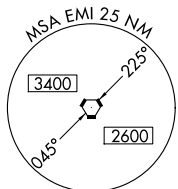


VORTAC EMI 117.9 Chan 126	APP CRS 358°	Rwy Idg TDZE Apt Elev	5100 788 789
---	------------------------	-----------------------------	---

VOR RWY 34

CARROLL COUNTY RGNL/JACK B POAGE FIELD (DMW)

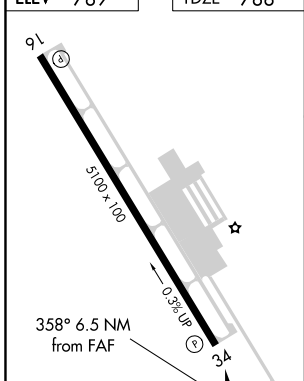
<p>▼ ▲ NA</p>		<p>MISSED APPROACH: Climbing left turn to 2900 direct EMI VORTAC and hold.</p>	
AWOS-3 121.25	POTOMAC APP CON 125.525 291.625	GCO 121.725	UNICOM 122.7 (CTAF) 0



NE-3, 22 APR 2021 to 20 MAY 2021

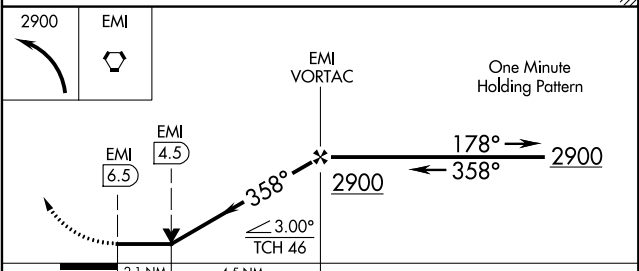
NE-3, 22 APR 2021 to 20 MAY 2021

ELEV 789	TDZE 788
-----------------	-----------------



FAF to MAP 6.5 NM					
Knots	60	90	120	150	180
Min:Sec	6:30	4:20	3:15	2:36	2:10

WASHINGTON DC METROPOLITAN SFRA
 WARNING -- WASHINGTON DC SFRA.
 CTC POTOMAC APP CON



CATEGORY	A	B	C	D
S-34	1480-1	692 (700-1)	1480-2 692 (700-2)	NA
CIRCLING	1480-1	691 (700-1)	1480-2 691 (700-2)	NA

VOR RWY 34