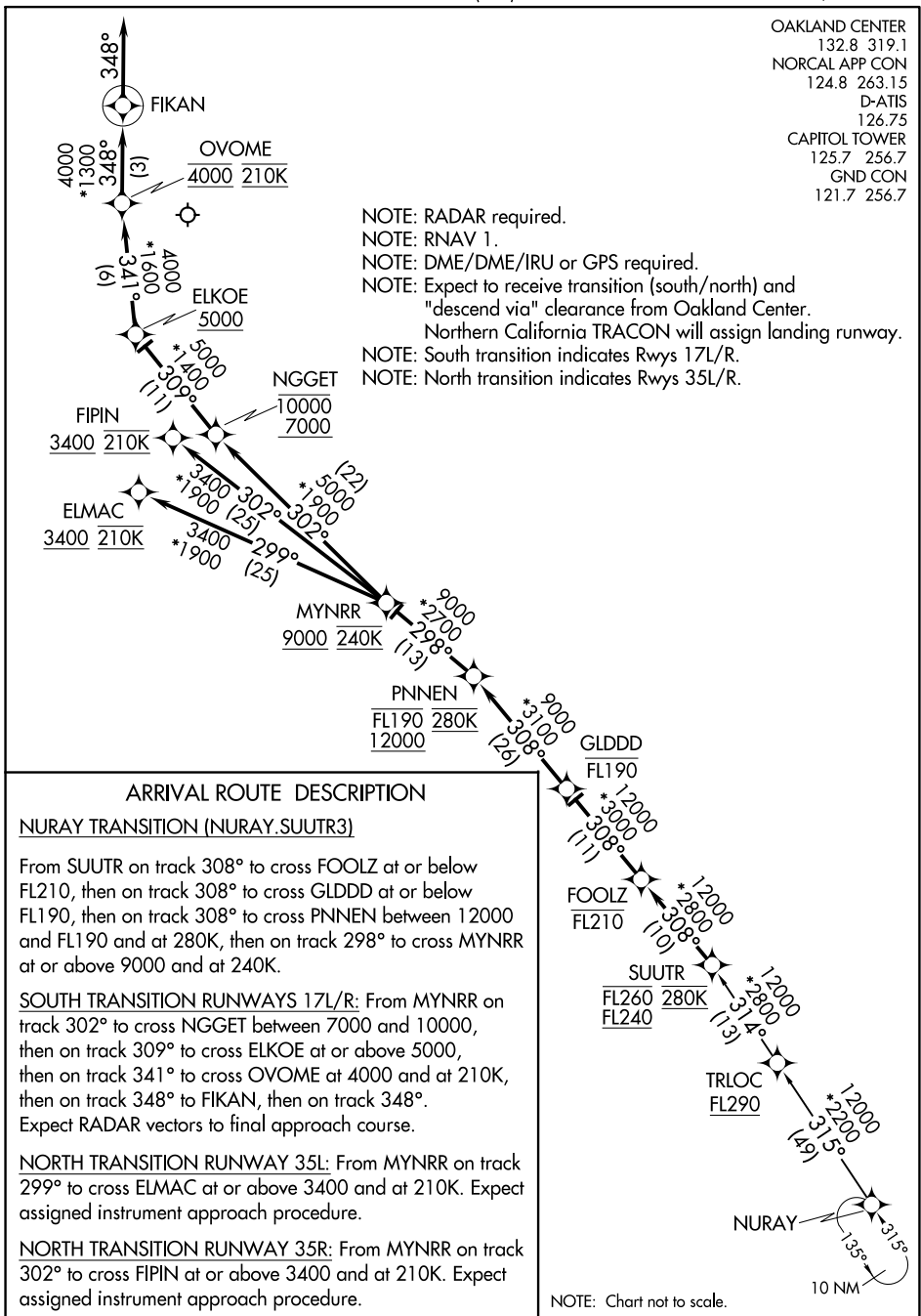


SUUTR THREE ARRIVAL (RNAV) AL-5490 (FAA)

SACRAMENTO INTL (SMF)
SACRAMENTO, CALIFORNIA

OAKLAND CENTER
132.8 319.1
NORCAL APP CON
124.8 263.15
D-ATIS
126.75
CAPITOL TOWER
125.7 256.7
GND CON
121.7 256.7

- NOTE: RADAR required.
- NOTE: RNAV 1.
- NOTE: DME/DME/IRU or GPS required.
- NOTE: Expect to receive transition (south/north) and "descend via" clearance from Oakland Center.
- NOTE: Northern California TRACON will assign landing runway.
- NOTE: South transition indicates Rwy 17L/R.
- NOTE: North transition indicates Rwy 35L/R.



ARRIVAL ROUTE DESCRIPTION

NURAY TRANSITION (NURAY.SUUTR3)

From SUUTR on track 308° to cross FOOLZ at or below FL210, then on track 308° to cross GLDDD at or below FL190, then on track 308° to cross PNNEN between 12000 and FL190 and at 280K, then on track 298° to cross MYNRR at or above 9000 and at 240K.

SOUTH TRANSITION RUNWAYS 17L/R: From MYNRR on track 302° to cross NGGET between 7000 and 10000, then on track 309° to cross ELKOE at or above 5000, then on track 341° to cross OVOME at 4000 and at 210K, then on track 348° to FIKAN, then on track 348°.

Expect RADAR vectors to final approach course.

NORTH TRANSITION RUNWAY 35L: From MYNRR on track 299° to cross ELMAC at or above 3400 and at 210K. Expect assigned instrument approach procedure.

NORTH TRANSITION RUNWAY 35R: From MYNRR on track 302° to cross FIPIN at or above 3400 and at 210K. Expect assigned instrument approach procedure.

NOTE: Chart not to scale.

SW-2, 22 APR 2021 to 20 MAY 2021

SW-2, 22 APR 2021 to 20 MAY 2021

SUUTR THREE ARRIVAL (RNAV)

(SUUTR.SUUTR3) 21MAY20

SACRAMENTO, CALIFORNIA
SACRAMENTO INTL (SMF)