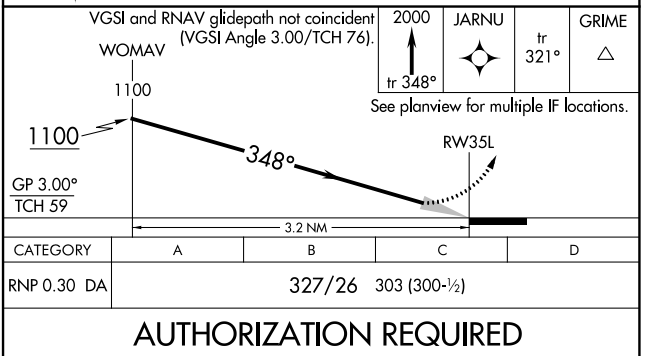
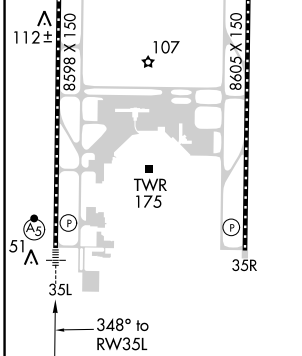
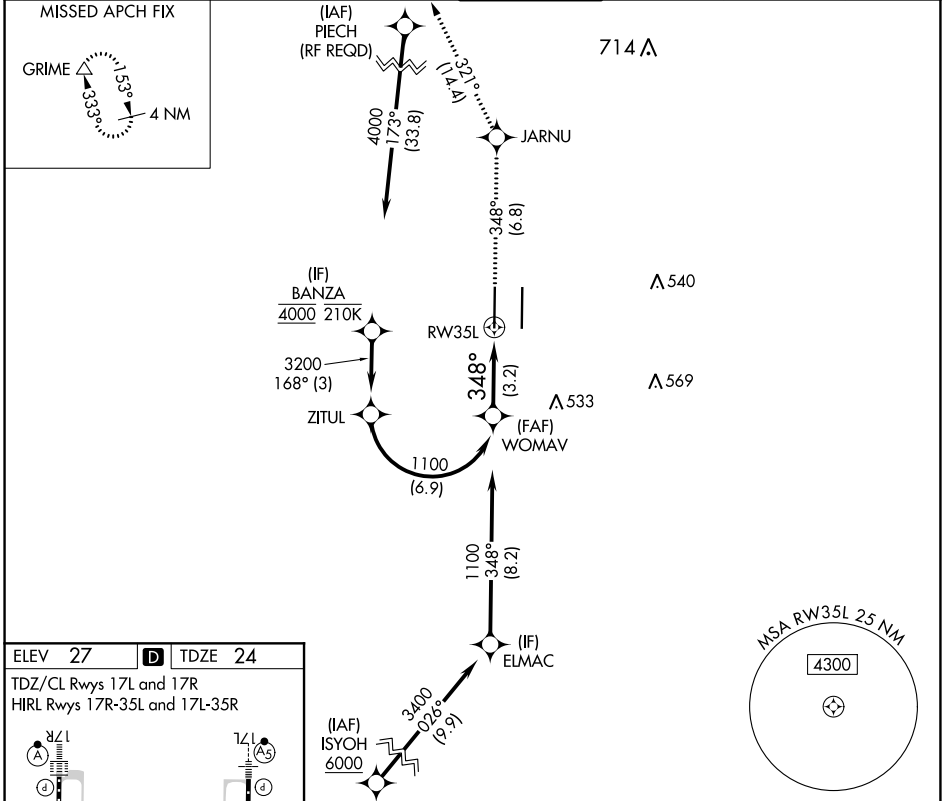


APP CRS 348°	Rwy Idg TDZE Apt Elev	8598 24 27
------------------------	-----------------------------	---------------------------------------

RNAV (RNP) Z RWY 35L

SACRAMENTO INTL (SMF)

RNP AR APCH.		MALSR	MISSED APPROACH: Climb to 2000 on track 348° to JARNU and track 321° to GRIME and hold.		
▼ For uncompensated Baro-VNAV systems, procedure NA below -4°C or above 54°C. For inop ALS, increase RNP 0.30 all Cats visibility to RVR 5000.					
D-ATIS 126.75	NORCAL APP CON 125.4 259.1 (W-NE) 125.25 257.9 (SW) 127.4 317.5 (E-SE)	CAPITOL TOWER 125.7 256.7	GND CON 121.7 256.7	CLNC DEL 121.1 256.7	CPDLC



SW-2, 22 APR 2021 to 20 MAY 2021

SW-2, 22 APR 2021 to 20 MAY 2021