

WAAS CH 93615 W27B	APP CRS 273°	Rwy Idg TDZE Apt Elev	5003 8 8
----------------------------------------	------------------------	-----------------------------	-------------------------------------

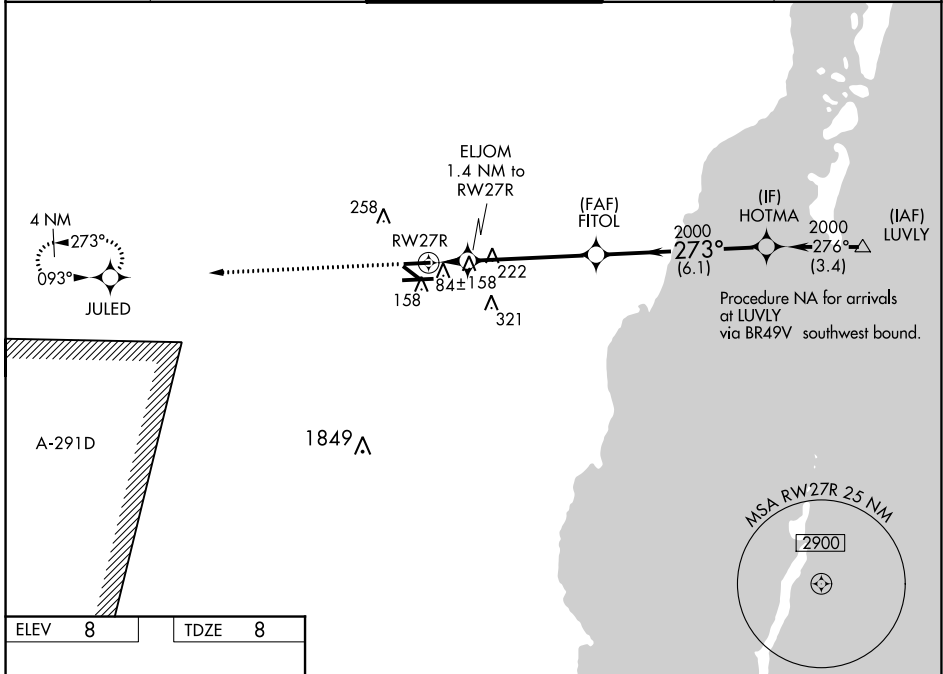
RNAV (GPS) RWY 27R

MIAMI EXECUTIVE (TMB)

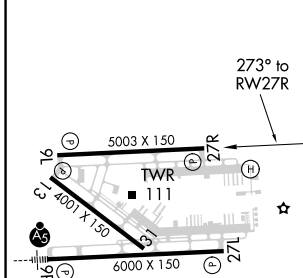
▼ For uncompensated Baro-VNAV systems, LNAV/VNAV NA below -1.5°C (5°F) or above 49°C (120°F). DME/DME RNP-0.3 NA. When local altimeter setting not received, use Miami Intl altimeter setting and adjust all DA 27 feet and all MDA 40 feet; increase LPV all Cats visibility ¼ mile, LNAV Cat D visibility ¼ mile, and Circling Cat D visibility ¼ mile. Baro-VNAV NA when using Miami Intl altimeter setting. Circling to Rwy 13, 31 NA at night.

▲ MISSED APPROACH: Climb to 2000 direct JULED and hold.

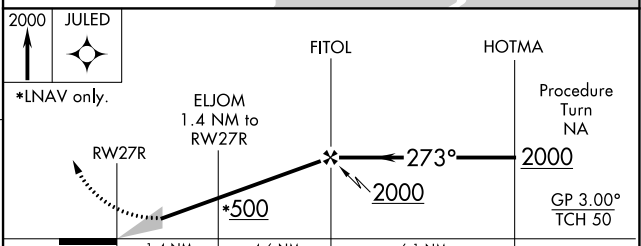
ATIS 124.0	MIAMI APP CON 125.5 354.1	TAMIAMI TOWER ★ 118.9 (CTAF) 0	GND CON 121.7	CLNC DEL 133.0
----------------------	-------------------------------------	------------------------------------------	-------------------------	--------------------------



ELEV 8	TDZE 8
---------------	---------------



- REIL Rwy 13
- HIRL Rwy 9R-27L
- MIRL Rwy 9L-27R
- MIRL Rwy 13-31



CATEGORY	A	B	C	D
LPV DA	258- ³ / ₄ 250 (300- ³ / ₄)			
LNAV/VNAV DA	352-1 ¹ / ₄ 344 (400-1 ¹ / ₄)			
LNAV MDA	420-1	412 (500-1)	420-1 ¹ / ₄	412 (500-1 ¹ / ₄)
CIRCLING	460-1	452 (500-1)	460-1 ¹ / ₂	640-2 452 (500-1 ¹ / ₂) 632 (700-2)

SE-3, 22 APR 2021 to 20 MAY 2021

SE-3, 22 APR 2021 to 20 MAY 2021