

LOC I-TMB 108.7	APP CRS 093°	Rwy Idg 6000 TDZE 10 Apt Elev 10
---------------------------	------------------------	---

ILS or LOC RWY 9R

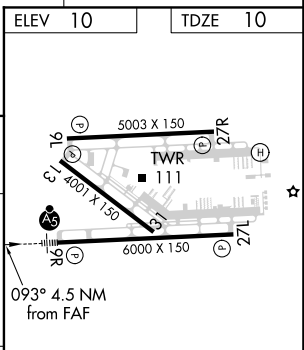
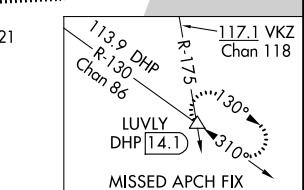
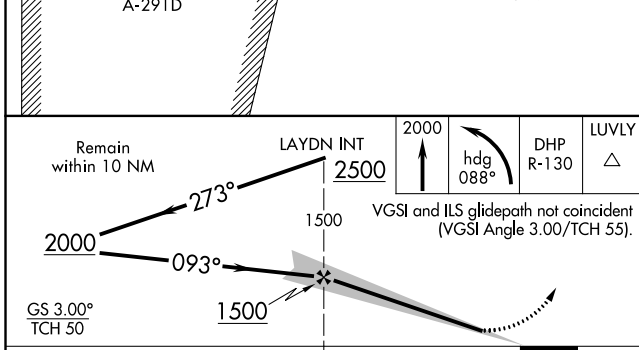
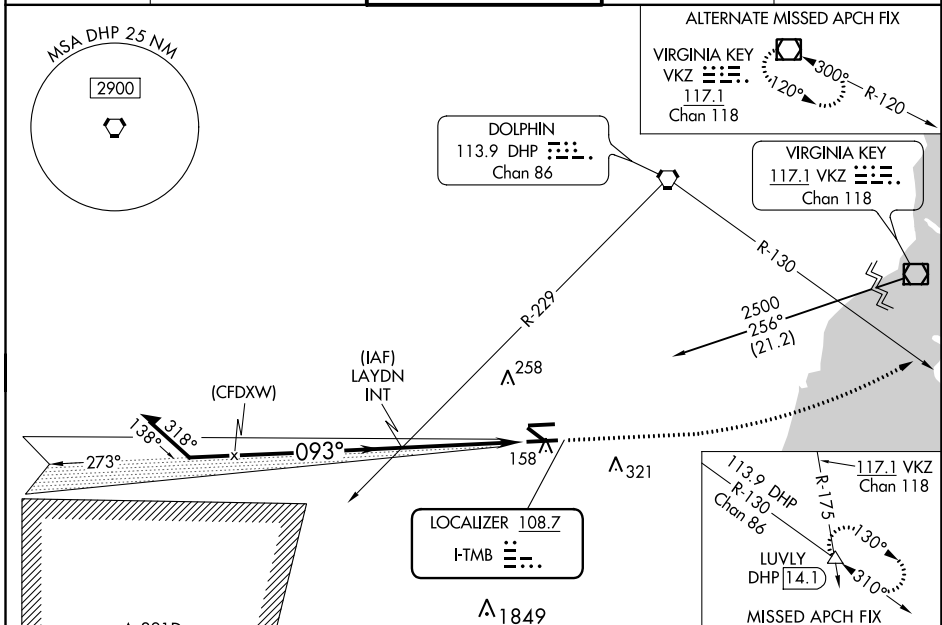
MIAMI EXECUTIVE (TMB)

⚠ Circling Rwy 13, 31 NA at night. For inop ALS when using Miami Intl altimeter setting, increase Cat C/D visibility to 1 3/8 SM. When local altimeter setting not received, use Miami Intl altimeter setting and increase S-ILS 9R DA to 237 feet and all MDA 40 feet, increase S-LOC 9R Cat C/D visibility 1/8 SM.

MALSR
A5

MISSED APPROACH: Climb to 2000 then left turn on heading 088° and DHP VORTAC R-130 to LUVLY INT/DHP 14.1 DME and hold.

ATIS 124.0	MIAMI APP CON 125.5 354.1	TAMIAMI TOWER ★ 118.9 (CTAF) 0	GND CON 121.7	CLNC DEL 133.0
----------------------	-------------------------------------	---	-------------------------	--------------------------



CATEGORY	A	B	C	D
S-ILS 9R		210-1/2	200 (200-1/2)	
S-LOC 9R	460-1/2	450 (500-1/2)	460-7/8	450 (500-7/8)
CIRCLING	460-1	450 (500-1)	460-1 1/2	640-2

FAF to MAP 4.5 NM					
Knots	60	90	120	150	180
Min:Seq	4:30	3:00	2:15	1:48	1:30

SE-3, 22 APR 2021 to 20 MAY 2021

SE-3, 22 APR 2021 to 20 MAY 2021