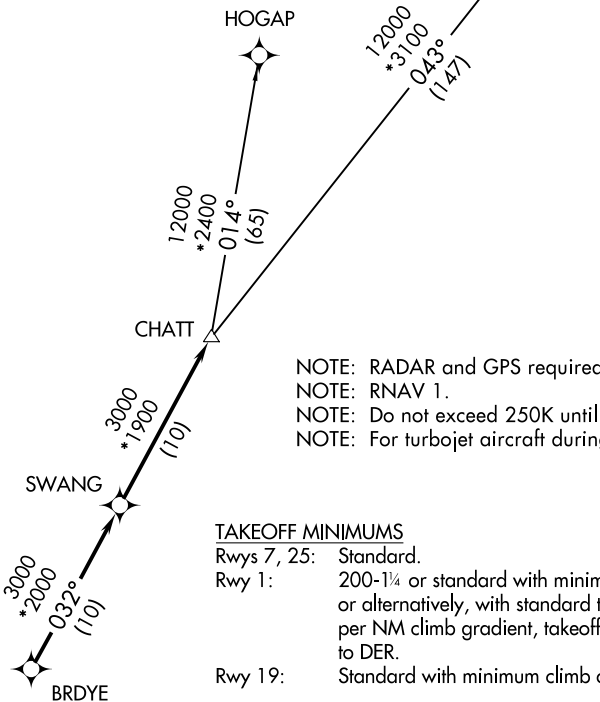


# CHATT SIX DEPARTURE (RNAV)

AUGUSTA DEP CON ★  
119.15 284.625  
CLNC DEL  
126.075  
CTAF  
122.8  
AWOS-3  
118.025

**TOP ALTITUDE:  
ASSIGNED BY ATC**

GREENSBORO  
GSO



- NOTE: RADAR and GPS required.
- NOTE: RNAV 1.
- NOTE: Do not exceed 250K until advised by ATC.
- NOTE: For turbojet aircraft during Masters golf tournament week.

### TAKEOFF MINIMUMS

- Rwys 7, 25: Standard.
- Rwy 1: 200-1¼ or standard with minimum climb of 220' per NM to 800, or alternatively, with standard takeoff minimums and a normal 200' per NM climb gradient, takeoff must occur no later than 1400' prior to DER.
- Rwy 19: Standard with minimum climb of 201' per NM to 1300'.



NOTE: Chart not to scale.

### DEPARTURE ROUTE DESCRIPTION

TAKEOFF RWY 1, 7, 19, 25: Climb on assigned heading for RADAR vectors to BRDYE, then on depicted route to CHATT, thence . . . .  
. . . . maintain altitude assigned by ATC. Expect clearance to filed altitude/flight level within 10 minutes after departure.

GREENSBORO TRANSITION (CHATT6.GSO)  
HOGAP TRANSITION (CHATT6.HOGAP)