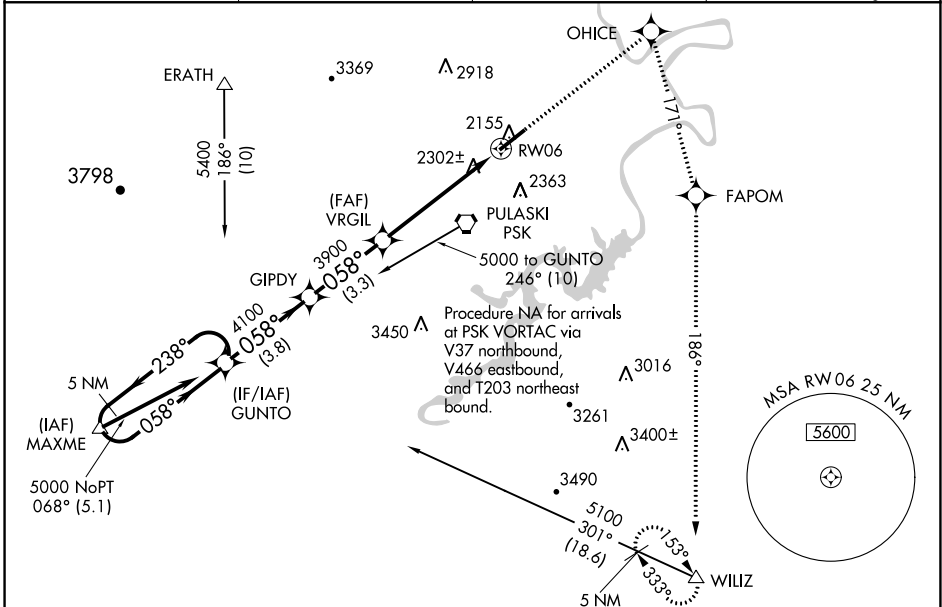


WAAS CH 87015 W06A	APP CRS 058°	Rwy Idg TDZE Apt Elev	6201 2105 2105
--	------------------------	-----------------------------	---

RNAV (GPS) RWY 6

NEW RIVER VALLEY (PSK)

RNP APCH.		MALSR AS	MISSED APPROACH: Climb to 6000 direct OHICE and right turn via track 171° to FAPOM and via track 186° to WILIZ and hold.
⚠ For uncompensated Baro-VNAV systems, LNAV/VNAV NA below -19°C or above 44°C. When local altimeter setting not received, use Blacksburg altimeter setting and increase all DA 36 feet, and all MDA 40 feet. VDP and Baro-VNAV NA when using Blacksburg altimeter setting. Inop table does not apply to LPV all Cats and LNAV Cats A and B. For inop MALSR, increase LNAV Cat C visibility to 1 1/4 SM.			
AWOS-3 127.375	ROANOKE APP CON 126.0 339.8	ROANOKE CLNC DEL 121.7	UNICOM 122.7 (CTAF)



NE-3, 22 APR 2021 to 20 MAY 2021

NE-3, 22 APR 2021 to 20 MAY 2021

ELEV 2105		TDZE 2105	
5 NM Holding Pattern GUNTO		OHICE FAPOM tr 171° WILIZ tr 186°	
VGSI and RNAV glidepath not coincident (VGSI Angle 3.00/TCH 58). * LNAV only.			
GP 3.00° TCH 58 5000 ← 238° / 058° → 4100		*1.3 NM to RW06 3900 → 3900 → RW06	
3.8 NM 3.3 NM 4.1 NM 1.3 NM		2174±A 2113±A 2166±A 2268 058° to RW06	
CATEGORY	A	B	D
LPV DA	2305-1		200 (200-1)
LNAV/DA VNAV	2597-1 1/4		492 (500-1 1/4)
LNAV MDA	2560-1		455 (500-1)
CIRCLING	2620-1	515 (600-1)	2680-2 575 (600-2)
HIRL Rwy 6-24 REIL Rwy 24			