


LOC/DME I-ADS 110.1 Chan 38	APP CRS 155°	Rwy Idg 6224 TDZE 643 Apt Elev 645
---	------------------------	---

ILS or LOC RWY 15

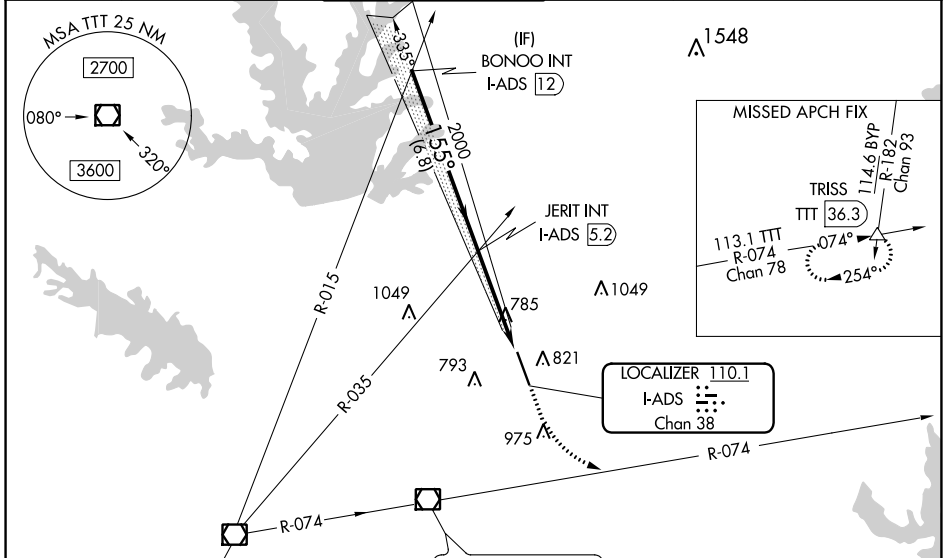
ADDISON (ADS)

⚠ When local altimeter setting not received, use Dallas Love Fld altimeter setting and increase all DA 39 feet and all MDA 40 feet, increase Circling Cat C visibility ¼ SM. Inoperative table does not apply to S-ILS 15 all Cats, S-LOC 15 Cats A, B & C. For inoperative MALSR, increase S-LOC 15 Cat D visibility to 1¼. Helicopter visibility reduction below 1 SM NA. For inop MALSR when using Dallas Love Fld altimeter setting increase S-LOC Cat C visibility to 1¼ and Cat D visibility to 1½.

MALSR


MISSED APPROACH: Climb to 1500 then climbing left turn to 3000 via heading 105° and TTT VOR/DME R-074 to TRISS Int/TTT 36.3 DME and hold.

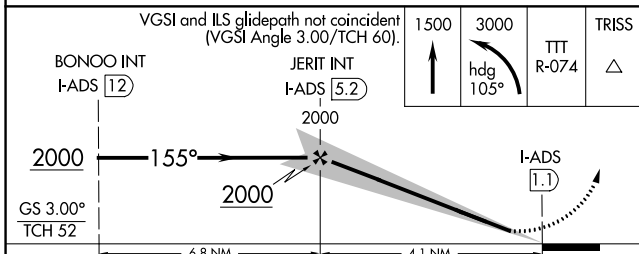
ATIS 133.4	REGIONAL APP CON 124.3 282.275	ADDISON TOWER* 126.0 (CTAF) 239.0	GND CON 121.6	CLNC DEL 119.55	UNICOM 122.95
----------------------	--	---	-------------------------	---------------------------	-------------------------



SC-2, 22 APR 2021 to 20 MAY 2021

SC-2, 22 APR 2021 to 20 MAY 2021

RADAR REQUIRED



ELEV 645 **D** TDZE 643

155° 4.1 NM from FAF

TWR 710

REIL Rwy 33
HIRL Rwy 15-33

FAF to MAP 4.1 NM

Knots	60	90	120	150	180
Min:Sec	4:06	2:44	2:03	1:38	1:22

CATEGORY	A	B	C	D
S-ILS 15		893-1	250 (300-1)	
S-LOC 15		1040-1	397 (400-1)	
C CIRCLING	1200-1	555 (600-1)	1280-1¾ 635 (700-1¾)	1400-2½ 755 (800-2½)