

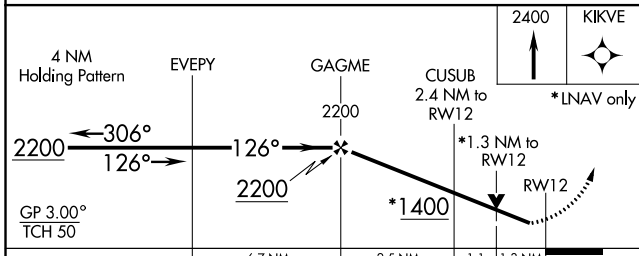
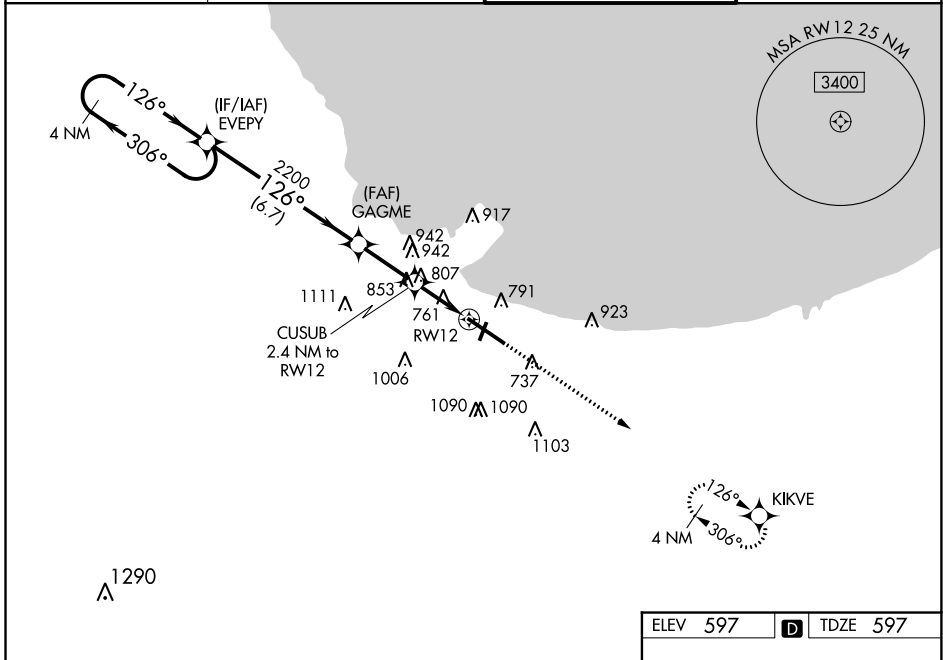
WAAS CH <b>70623</b> <b>W12A</b>	APP CRS <b>126°</b>	Rwy Idg TDZE Apt Elev	<b>7959</b> <b>597</b> <b>597</b>
--	------------------------	-----------------------------	---

# RNAV (GPS) Y RWY 12

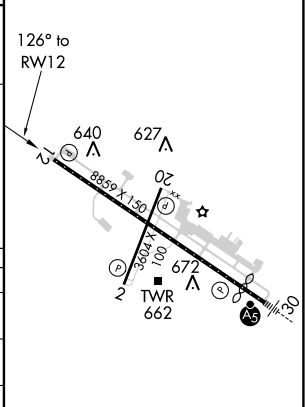
GARY/CHICAGO INTL (GYY)

<p>▼ ▲</p>	<p>For uncompensated Baro-VNAV systems, LNAV/VNAV NA below -16°C (4°F) or above 54°C (130°F). DME/DME RNP-0.3 NA. Rwy 12 helicopter visibility reduction below ¾ SM NA.</p>	<p>MISSED APPROACH: Climb to 2400 direct KIKVE and hold.</p>
----------------	---	--

<p>ATIS <b>134.575</b></p>	<p>CHICAGO APP CON <b>133.1 285.6</b></p>	<p>GARY TOWER ★ <b>125.6 (CTAF) 0</b></p>	<p>GND CON <b>121.9</b></p>
--------------------------------	---	---	---------------------------------



ELEV 597	D	TDZE 597
----------	---	----------



CATEGORY	A	B	C	D
LPV DA		797-¾	200 (200-¾)	
LNAV/VNAV DA		1049-1⅓	452 (500-1⅓)	
LNAV MDA	1060-1	463 (500-1)	1060-1⅓	463 (500-1⅓)
CIRCLING	1140-1 543 (600-1)	1180-1 583 (600-1)	1400-2¼ 803 (900-2¼)	1420-2¾ 823 (900-2¾)

REIL Rwy 2, 12 and 20  
HIRL Rwy 12-30  
MIRL Rwy 2-20

EC-2, 22 APR 2021 to 20 MAY 2021

EC-2, 22 APR 2021 to 20 MAY 2021