

VOR/DME PWA <b>113.4</b> Chan <b>81</b>	APP CRS <b>176°</b>	Rwy Idg TDZE Apt Elev	<b>6844</b> <b>1291</b> <b>1300</b>
-----------------------------------------------	------------------------	-----------------------------	-------------------------------------------

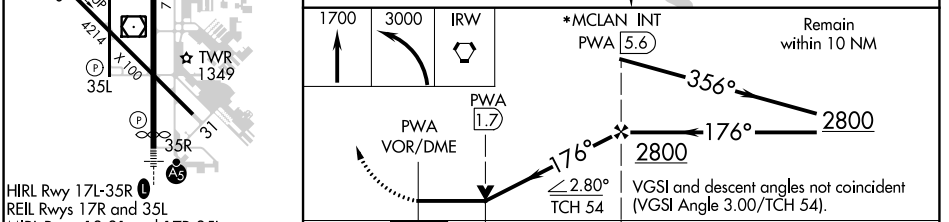
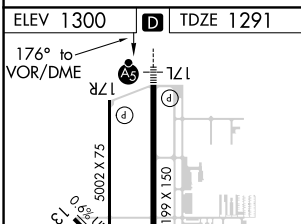
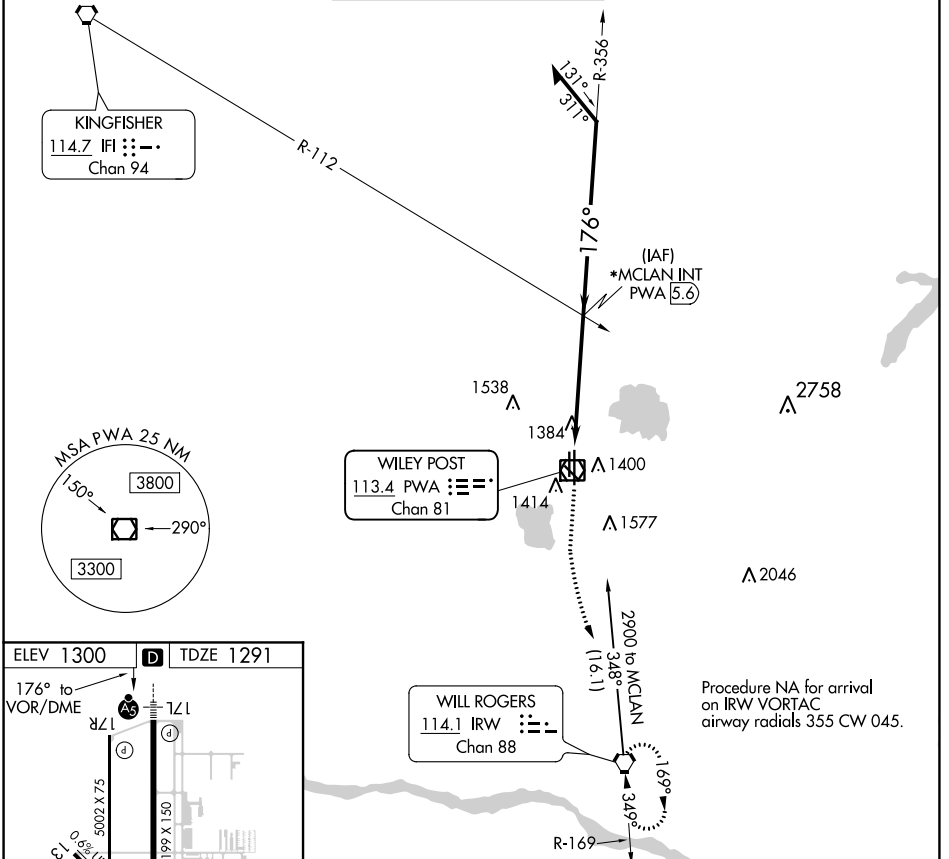
# VOR RWY 17L

WILEY POST (PWA)

VDP NA when using Will Rogers World altimeter setting. For inop ALS, increase S-17L Cat C/D visibility to 1 SM. For inop ALS, when using Will Rogers World altimeter setting, increase Cat C/D visibility to 1½ SM. When local altimeter setting not received, use ASR Will Rogers World altimeter setting and increase all MDA 40 feet and increase Cat C/D visibility ½ SM. \*RADAR fix in lieu of MCLAN INT will be provided on pilot request.

MALSR  
MISSED APPROACH: Climb to 1700 then climbing left turn to 3000 direct IRW VORTAC and hold.

ATIS <b>128.725</b>	OKC CITY APP CON <b>124.6 266.8</b>	WILEY POST TOWER* <b>126.9 (CTAF) 306.9</b>	GND CON <b>121.7</b>	UNICOM <b>122.95</b>
------------------------	----------------------------------------	------------------------------------------------	-------------------------	-------------------------



FAF to MAP 5.6 NM					
Knots	60	90	120	150	180
Min:Sec	5:36	3:44	2:48	2:14	1:52
CATEGORY	A	B	C	D	
S-17L	1660-½	369 (400-½)	1660-⅝	369 (400-⅝)	

SC-1, 22 APR 2021 to 20 MAY 2021

SC-1, 22 APR 2021 to 20 MAY 2021