

WAAS CH <b>78437</b> <b>W35B</b>	APP CRS <b>355°</b>	Rwy Idg TDZE Apt Elev	<b>5001</b> <b>1275</b> <b>1300</b>
--	------------------------	-----------------------------	---

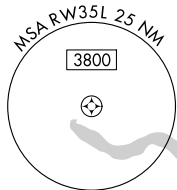
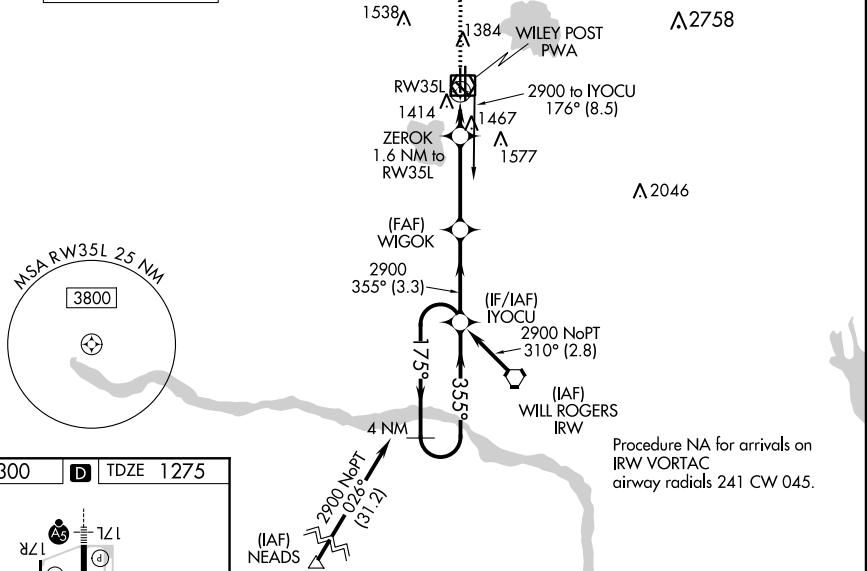
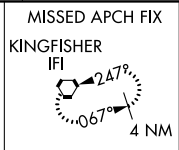
# RNAV (GPS) RWY 35L

WILEY POST (PWA)

**ASR** DME/DME RNP-0.3 NA. VDP NA when using Will Rogers World altimeter setting. When local altimeter setting not received, use Will Rogers World altimeter setting and increase all MDA 40 feet; increase LP Cat C/D visibility 1/8 mile and Circling Cat C 1/4 mile.

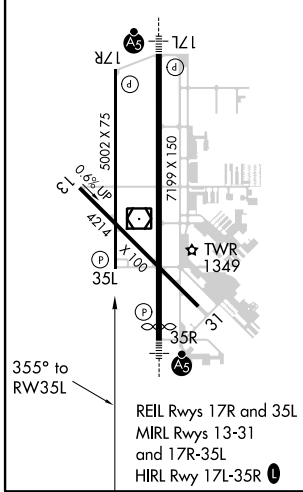
**MISSED APPROACH:** Climb to 1700 then climbing left turn to 3400 direct IFI VORTAC and hold.

ATIS <b>128.725</b>	OKE CITY APP CON <b>124.6 266.8</b>	WILEY POST TOWER ★ <b>126.9(CTAF) 306.9</b>	GND CON <b>121.7</b>	UNICOM <b>122.95</b>
------------------------	--	--	-------------------------	-------------------------



Procedure NA for arrivals on IRW VORTAC airway radials 241 CW 045.

ELEV 1300	<b>D</b>	TDZE 1275
-----------	----------	-----------



1700	3400	IFI	WIGOK	IYOCU	4 NM Holding Pattern
ZEROK 1.6 NM to RW35L		→ 355° → 2900		← 355° ← 2900	
RW35L 1.1 NM to RW35L		1820		3.00° TCH 45	
1.1 NM		0.5 NM		3.4 NM	
3.4 NM		3.3 NM			
CATEGORY	A	B	C	D	
LP MDA	1660-1	385 (400-1)	1660-1/8	385 (400-1/8)	
LNAV MDA	1720-1	445 (500-1)	1720-1/8	445 (500-1/8)	
<b>C</b> CIRCLING	1780-1	480 (500-1)	1880-1/2 580 (600-1/2)	1880-2 580 (600-2)	

SC-1, 22 APR 2021 to 20 MAY 2021

SC-1, 22 APR 2021 to 20 MAY 2021