


LOC/DME I-TFM 110.15 Chan 038 (Y)	APP CRS 355°	Rwy Idg 6844 TDZE 1299 Apt Elev 1300
---	------------------------	---

ILS or LOC RWY 35R

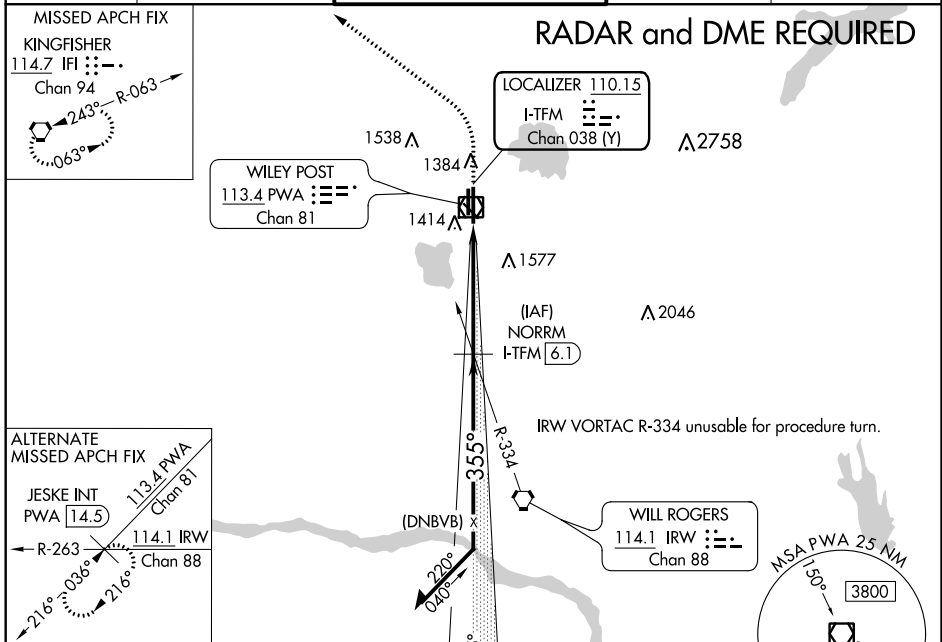
WILEY POST (PWA)

⚠ When local altimeter setting not received, use Will Rogers World altimeter setting and increase all DA 21 feet and all MDA 40 feet.
ASR VDP NA with Will Rogers World altimeter setting.

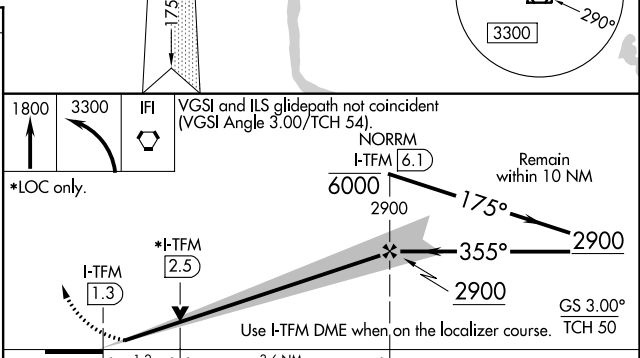
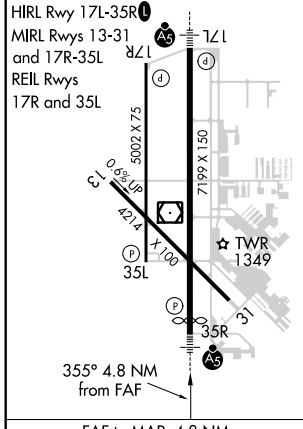
MALSR 

MISSED APPROACH: Climb to 1800 then climbing left turn to 3300 direct IFI VORTAC and hold.

ATIS 128.725	OKE CITY APP CON 124.6 266.8	WILEY POST TOWER ★ 126.9 (CTAF) 306.9	GND CON 121.7	UNICOM 122.95
------------------------	--	---	-------------------------	-------------------------



ELEV 1300	D	TDZE 1299
-----------	----------	-----------



CATEGORY	A	B	C	D
S-ILS 35R	1499-1/2		200 (200-1/2)	
S-LOC 35R	1740-1/2	441 (500-1/2)	1740-3/4 441 (500-3/4)	1740-1 441 (500-1)
C CIRCLING	1780-1	480 (500-1)	1880-1/2 580 (600-1/2)	1880-2 580 (600-2)

SC-1, 22 APR 2021 to 20 MAY 2021

SC-1, 22 APR 2021 to 20 MAY 2021