

LOC I-PWA 110.15	APP CRS 175°	Rwy Idg 6844
		TDZE 1291
		Apt Elev 1300

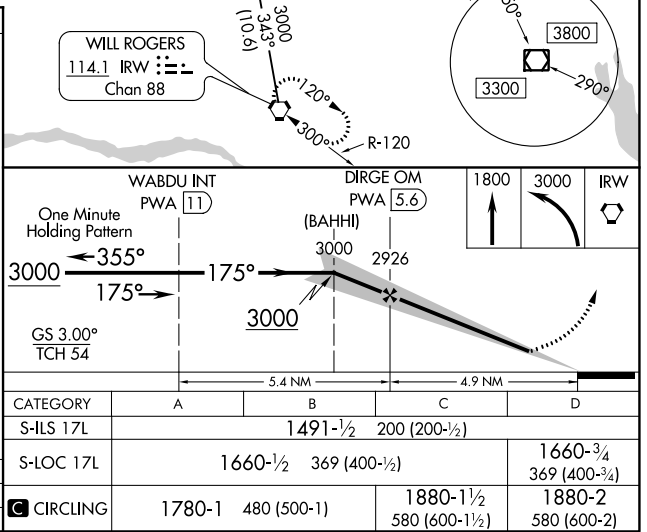
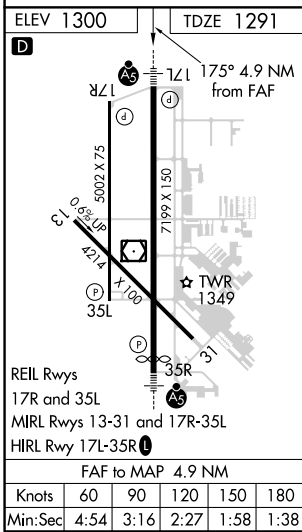
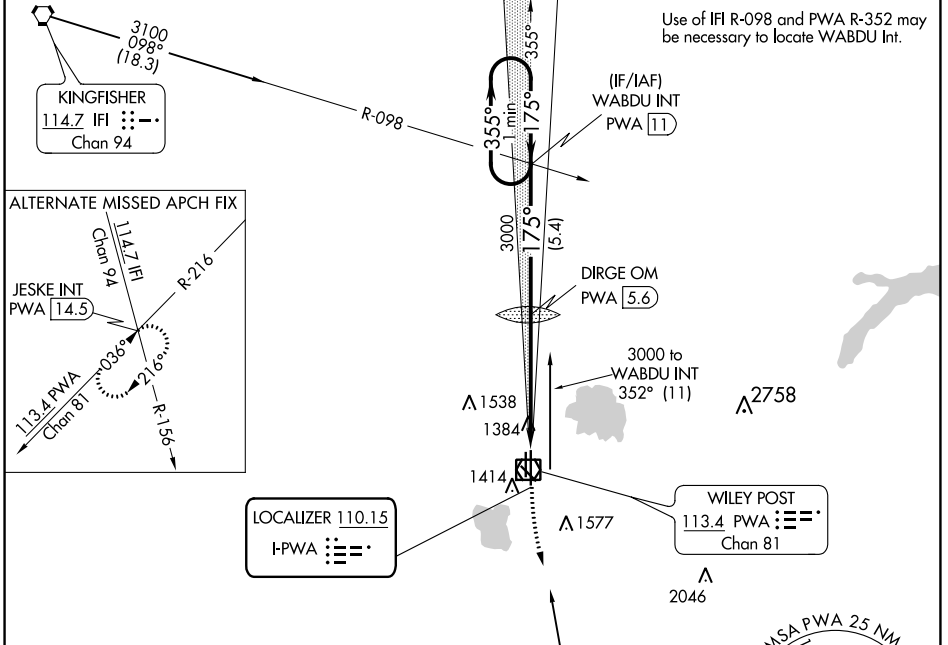
ILS or LOC RWY 17L

WILEY POST (PWA)

ASR When local altimeter setting not received, use Will Rogers World altimeter setting and increase all DA 21 feet and all MDA 40 feet and increase S-LOC 17L Cat C visibility $\frac{1}{4}$ mile.

MALSR MISSED APPROACH: Climb to 1800 then climbing left turn to 3000 direct IRW VORTAC and hold.

ATIS 128.725	OKE CITY APP CON 124.6 266.8	WILEY POST TOWER ★ 126.9 (CTAF) 306.9	GND CON 121.7	UNICOM 122.95
------------------------	--	---	-------------------------	-------------------------



CATEGORY	A	B	C	D
S-ILS 17L		1491- $\frac{1}{2}$	200 (200- $\frac{1}{2}$)	
S-LOC 17L		1660- $\frac{1}{2}$	369 (400- $\frac{1}{2}$)	1660- $\frac{3}{4}$ 369 (400- $\frac{3}{4}$)
CIRCLING	1780-1	480 (500-1)	1880-1 $\frac{1}{2}$ 580 (600-1 $\frac{1}{2}$)	1880-2 580 (600-2)

SC-1, 22 APR 2021 to 20 MAY 2021

SC-1, 22 APR 2021 to 20 MAY 2021