

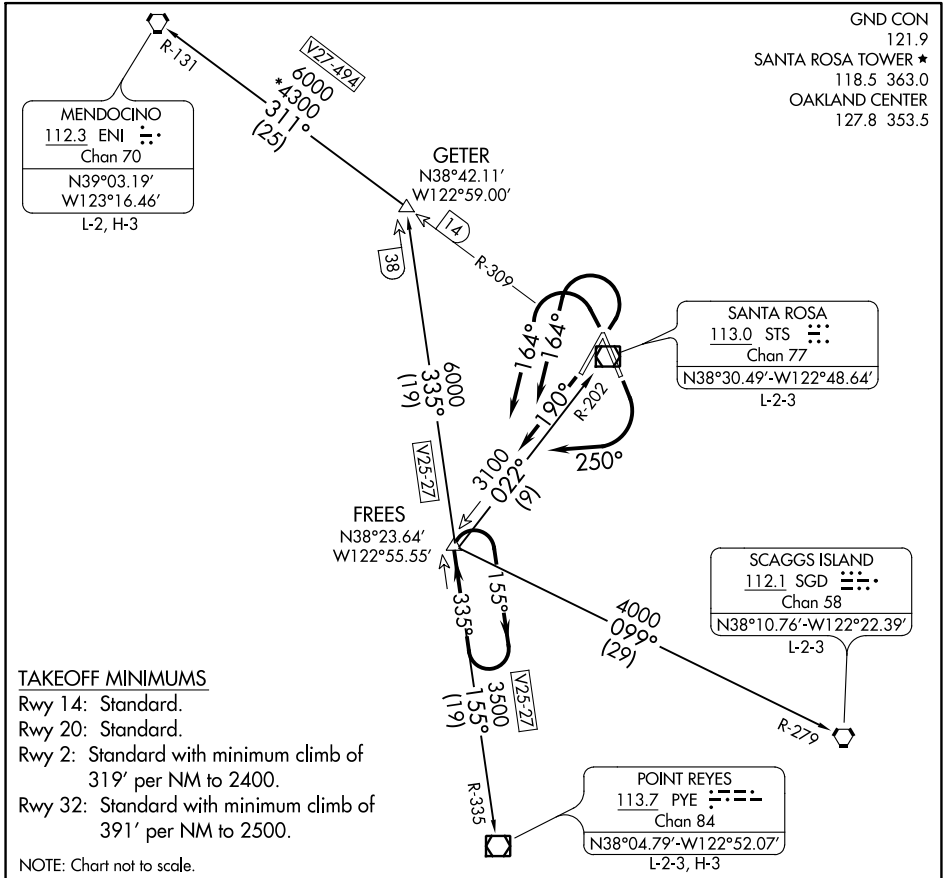
(FREES9.FREES) 17341

# FREES NINE DEPARTURE

CHARLES M SCHULZ-SONOMA COUNTY (STS)

AL-696 (FAA)

SANTA ROSA, CALIFORNIA



### TAKEOFF MINIMUMS

- Rwy 14: Standard.
- Rwy 20: Standard.
- Rwy 2: Standard with minimum climb of 319' per NM to 2400.
- Rwy 32: Standard with minimum climb of 391' per NM to 2500.

NOTE: Chart not to scale.

### DEPARTURE ROUTE DESCRIPTION

**TAKEOFF RUNWAYS 2, 32:** Climbing left turn heading 164°, thence . . . .

**TAKEOFF RUNWAY 14:** Climbing right turn heading 250°, thence . . . .

**TAKEOFF RUNWAY 20:** Climb on heading 190°, thence . . . .

. . . . intercept and climb on STS R-202 to cross FREES INT at or above MEA for route of flight, or continue climb in FREES holding pattern to MEA for route of flight then on (transition).

**MENDOCINO TRANSITION (FREES9.ENI):** From over FREES INT on PYE R-335 to GETER INT, then on ENI R-131 to ENI VORTAC.

**POINT REYES TRANSITION (FREES9.PYE):** From over FREES INT on PYE R-335 to PYE VOR/DME.

**SANTA ROSA TRANSITION (FREES9.STS):** From over FREES INT on STS R-202 to STS VOR/DME.

**SCAGGS ISLAND TRANSITION (FREES9.SGD):** From over FREES INT on SGD R-279 to SGD VORTAC.

# FREES NINE DEPARTURE

(FREES9.FREES) 15SEP16

SANTA ROSA, CALIFORNIA

CHARLES M SCHULZ-SONOMA COUNTY (STS)

SW-2, 22 APR 2021 to 20 MAY 2021