

APP CRS	Rwy Idg	7614
306°	TDZE	57
	Apt Elev	62

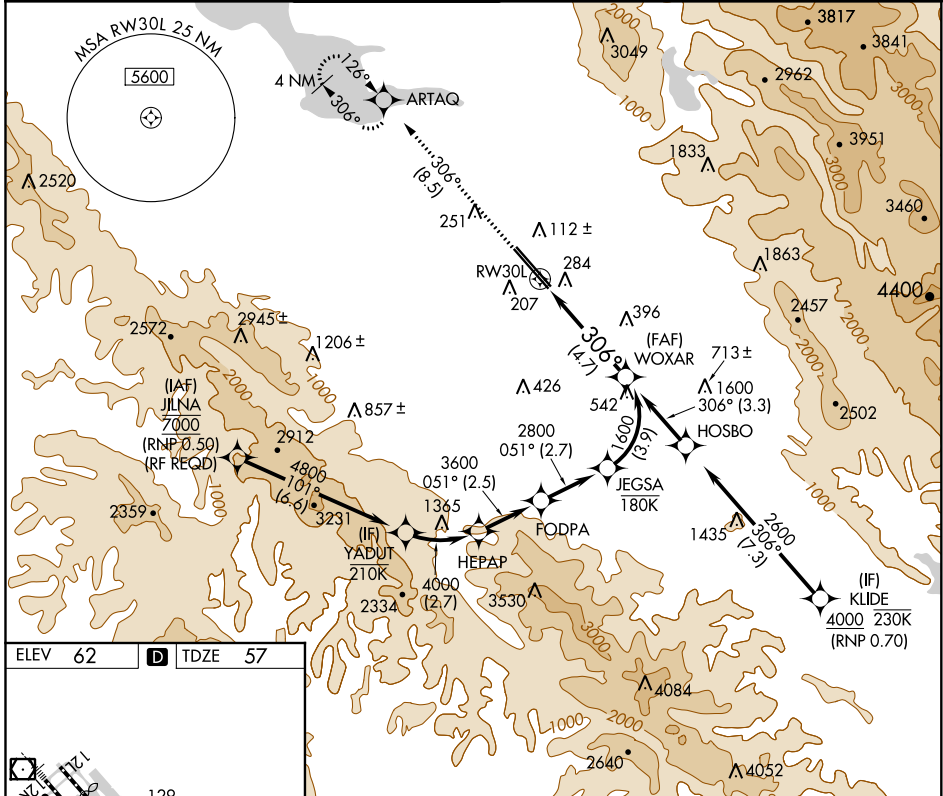
RNAV (RNP) Z RWY 30L

NORMAN Y MINETA SAN JOSE INTL (SJC)

▽ For uncompensated Baro-VNAV systems, procedure NA below -1°C (31°F) or above 54°C (130°F). GPS required. For inoperative MALSR, increase RNP 0.15 all Cats visibility to RVR 6000 and increase RNP 0.30 all Cats visibility to 1½ mile.

MALSR
 MISSED APPROACH: Climb to 2300 on track 306° to ARTAQ and hold.

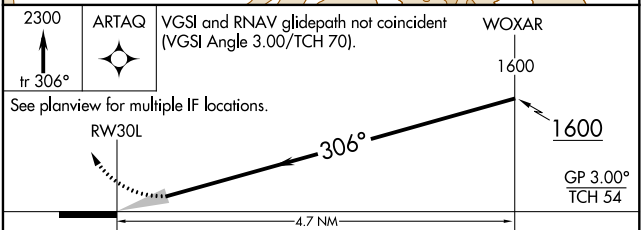
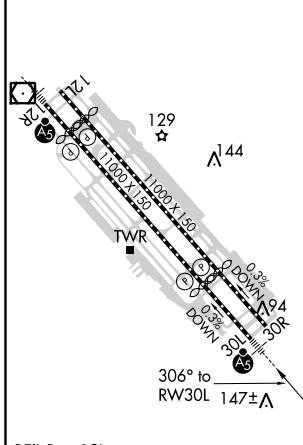
D-ATIS	NORCAL APP CON	SAN JOSE TOWER ★	GND CON	CLNC DEL	CPDLC	UNICOM
126.95	120.1 290.25	124.0 (CTAF) 0 257.6	121.7	118.0		122.95



SW-2, 22 APR 2021 to 20 MAY 2021

SW-2, 22 APR 2021 to 20 MAY 2021

ELEV 62	D	TDZE 57
---------	----------	---------



CATEGORY	A	B	C	D
RNP 0.15 DA		421/40	364 (400-¾)	
RNP 0.30 DA		544/60	487 (500-1¼)	

REIL Rwy 12L
 HIRL Rwys 12L-30R and 12R-30L

AUTHORIZATION REQUIRED