

LOC/DME I-RSR <b>110.9</b> Chan <b>46</b>	APP CRS <b>109°</b>	Rwy ldg TDZE <b>7001</b> <b>980</b> Apt Elev <b>1009</b>
---	------------------------	--

# ILS RWY 11 (CAT II & III)

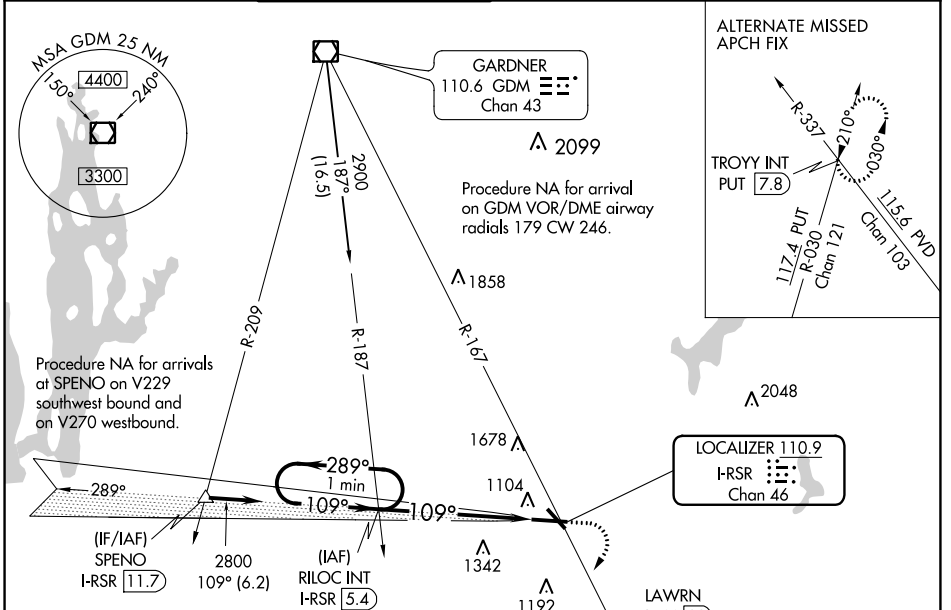
## WORCESTER RGNL (ORH)

**▼** DME required. CAT II: RVR 1000 authorized with specific OPSPEC, MSPEC, or LOA approval and use of autoland or HUD to touchdown. Procedure NA when tower closed.

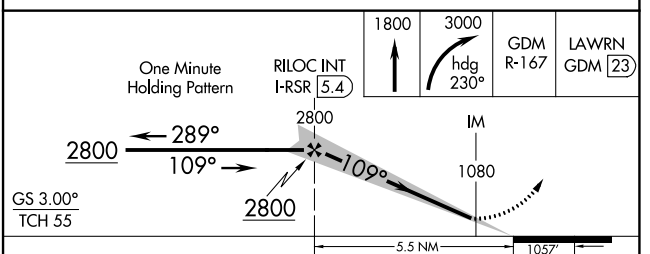
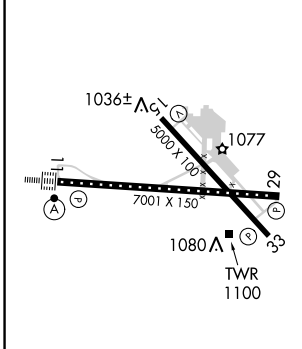
**▲** MISSED APPROACH: Climb to 1800 then climbing right turn to 3000 on heading 230° and GDM VOR/DME R-167 to LAWWRN/GDM 23 DME and hold, continue climb-in-hold to 3000.

ALSF-2

ATIS <b>126.55</b>	YANKEE APP CON <b>119.0 327.1</b>	WORCESTER TOWER* <b>120.5 (CTAF) 263.0</b>	GND CON <b>123.85</b>	CLNC DEL <b>128.65</b>	CLNC DEL <b>119.0</b> (When twr closed)	UNICOM <b>122.95</b>
-----------------------	--------------------------------------	---	--------------------------	---------------------------	---	-------------------------



ELEV <b>1009</b>	<b>D</b>	TDZE <b>980</b>
------------------	----------	-----------------



CATEGORY	A	B	C	D
S-ILS 11	CAT II RA 119/12 100 DA 1080			
S-ILS 11	CAT III RVR 06			

### CATEGORY II & III ILS - SPECIAL AIRCREW & AIRCRAFT CERTIFICATION REQUIRED

NE-1, 22 APR 2021 to 20 MAY 2021

NE-1, 22 APR 2021 to 20 MAY 2021