

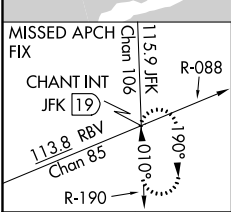
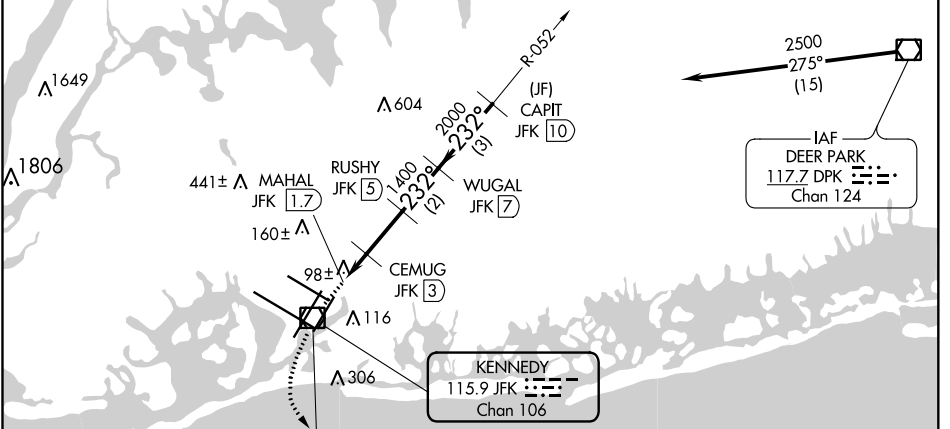
VOR/DME JFK 115.9 Chan 106	APP CRS 232°	Rwy Idg 8400 TDZE 12 Apt Elev 13
--	------------------------	---

VOR RWY 22L

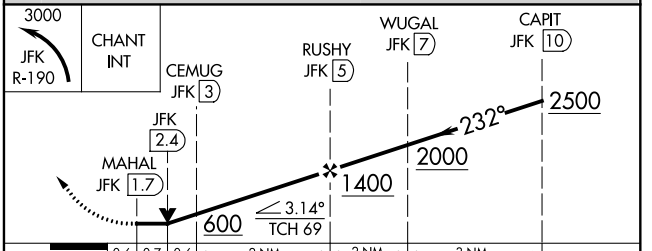
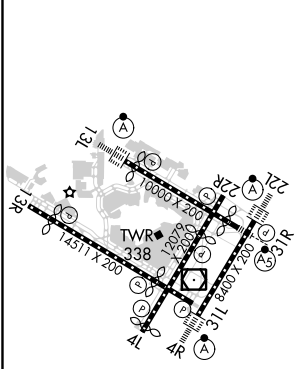
JOHN F KENNEDY INTL (JFK)

DME required.	ALSF-2	MISSED APPROACH: Climbing left turn to 3000 on JFK VOR/DME R-190 to CHANT INT/19 DME and hold.
▼ Rwy 22L helicopter visibility reduction below 1 SM NA. For inop ALS, increase S-22L Cat A/B visibility to RVR 5500.		

D-ATIS (ARR/DEP) (ARR-NE) (ARR-SW) 128.725 117.7 115.4	NEW YORK APP CON 128.125 269.0	KENNEDY TOWER Rwys 4R/22L and 13L/31R 119.1 281.55 Rwys 4L/22R and 13R/31L 123.9 281.55	GND CON 121.9 135.05 348.6	CLNC DEL 135.05 348.6	CPDLC
---	--	---	--	---	-------



ELEV 13	D	TDZE 12
---------	----------	---------



CATEGORY	A	B	C	D
S-22L	440/40	428 (500-3/4)	440/50	428 (500-1)
C CIRCLING	640-1	627 (700-1)	680-1 3/4 667 (700-1 3/4)	680-2 667 (700-2)

REIL Rwy 4L
RLS Rwys 13L and 13R
HIRL all Rwys
TDZ/CL Rwys 4L, 4R, 13L, 22L and 31R

NE-2, 22 APR 2021 to 20 MAY 2021

NE-2, 22 APR 2021 to 20 MAY 2021