

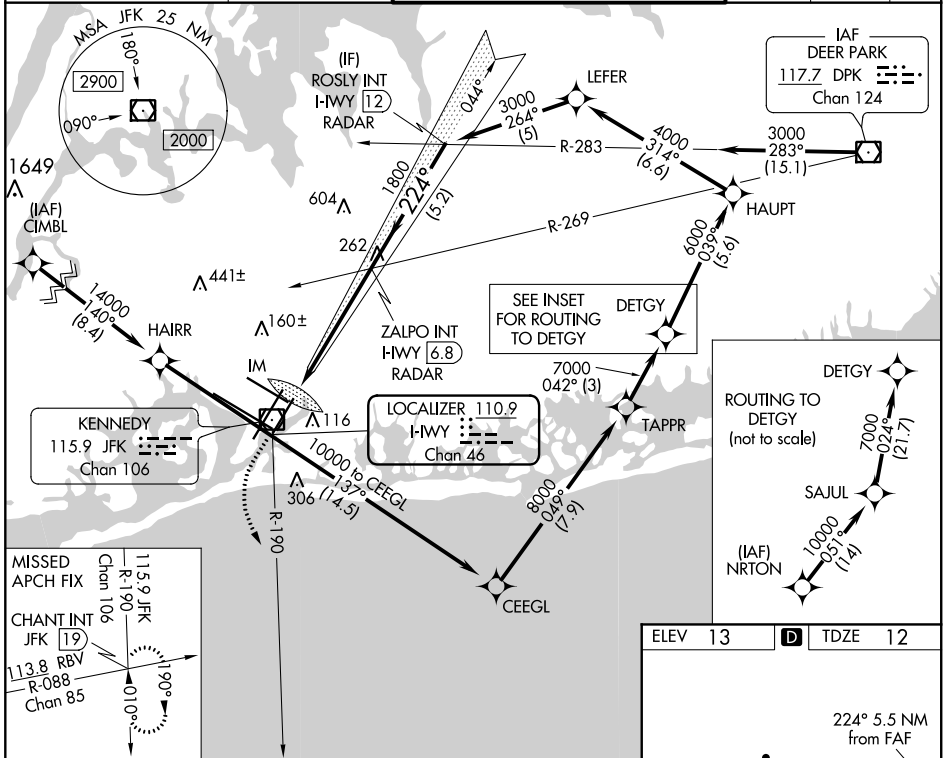
LOC/DME I-WWY 110.9 Chan 46	APP CRS 224°	Rwy Idg 8400 TDZE 12 Apt Elev 13
---	------------------------	---

ILS or LOC RWY 22L

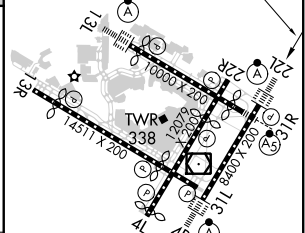
JOHN F KENNEDY INTL (JFK)

RNAV 1-GPS or RADAR required for procedure entry. From CIMBL, NRTON: RNAV 1-GPS required.	ALSF-2 	MISSED APPROACH: Climb to 500 then climbing left turn to 3000 on JFK VOR/DME R-190 to CHANT INT/19 DME and hold.
Simultaneous approach authorized.		

D-ATIS (ARR/DEP) (ARR-NE) (ARR-SW) 128.725 117.7 115.4	NEW YORK APP CON 128.125 269.0	KENNEDY TOWER Rwys 4R/22L and 13L/31R 119.1 281.55 Rwys 4L/22R and 13R/31L 123.9 281.55	GND CON 121.9 348.6	CLNC DEL 135.05 348.6	CPDLC
---	--	---	-------------------------------	---------------------------------	-------



MISSED APCH FIX Chan 106	115.9 JFK R-190	113.8 RBV R-088 Chan 85
500	3000	CHANT INT
JFK R-190		
VGSi and ILS glidepath not coincident (VGSi Angle 3.00/TCH 66).		
ZALPO INT I-WWY 6.8	1800	ROSLY INT I-WWY 12
*LOC only.		
H-WY 1.4	H-WY 2.8	3000
IM		GS 3.00° TCH 53
0.2	1.2 NM	4.1 NM
		5.2 NM



ELEV 13	TDZE 12
REIL Rwy 4L	
RLS Rwys 13L and 13R	
HIRL all Rwys	
TDZ/CL Rwys 4L, 4R, 13L, 22L and 31R	
FAF to MAP 5.5 NM	
Knots	60 90 120 150 180
Min:Sec	5:30 3:40 2:45 2:12 1:50

NE-2, 22 APR 2021 to 20 MAY 2021

NE-2, 22 APR 2021 to 20 MAY 2021