

LOC/DME I-WWY 110.9 Chan 46	APP CRS 224°	Rwy Idg 8400 TDZE 12 Apt Elev 13
---	------------------------	---

ILS RWY 22L (CAT II & III)

JOHN F KENNEDY INTL (JFK)

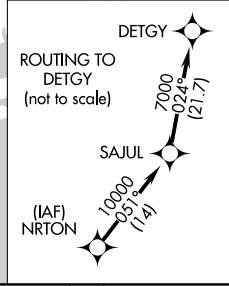
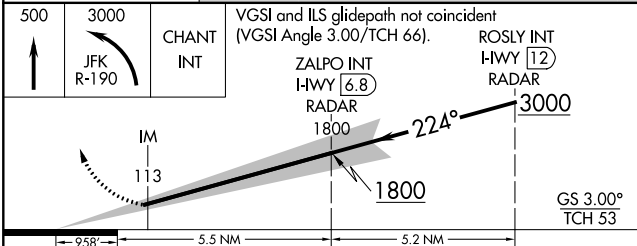
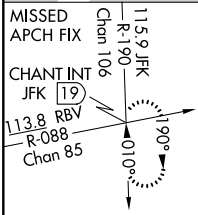
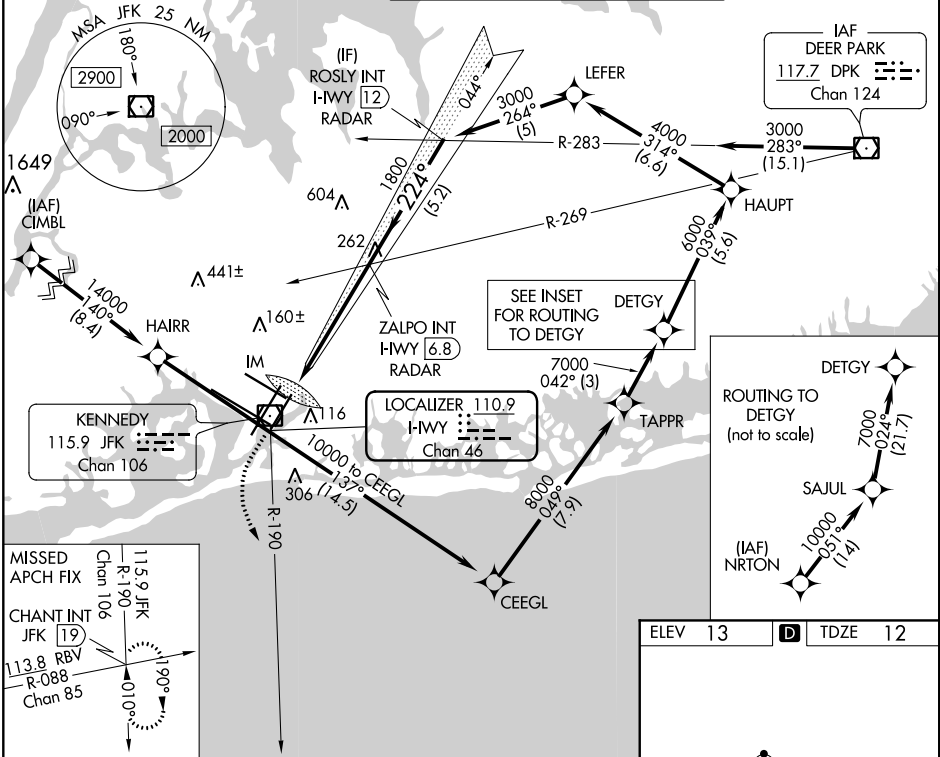
RNAV 1-GPS or RADAR required for procedure entry.
From CIMBL, NRTON: RNAV 1-GPS required.

ALSIF-2

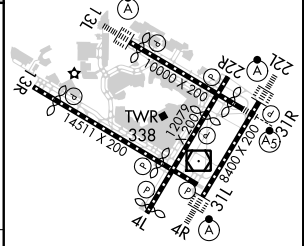
MISSED APPROACH: Climb to 500 then climbing left turn to 3000 on JFK VOR/DME R-190 to CHANT INT/19 DME and hold.

Simultaneous approach authorized.

D-ATIS (ARR/DEP) (ARR-NE) (ARR-SW) 128.725 117.7 115.4	NEW YORK APP CON 128.125 269.0	KENNEDY TOWER Rwys 4R/22L and 13L/31R 119.1 281.55 Rwys 4L/22R and 13R/31L 123.9 281.55	GND CON 2833 121.9 2836 348.6	CLNC DEL 2833 135.05 2836 348.6	CPDLC
---	--	---	---	---	-------



ELEV 13	D TDZE 12
---------	------------------



CATEGORY	A	B	C	D
S-ILS 22L	CAT II RA 113/12 100 DA 112			
S-ILS 22L	CAT III RVR 06			

CATEGORY II & III ILS - SPECIAL AIRCREW & AIRCRAFT CERTIFICATION REQUIRED

REIL Rwy 4L
RLS Rwys 13L and 13R
HIRL all Rwys
TDZ/CL Rwys 4L, 4R, 13L, 22L and 31R

NE-2, 22 APR 2021 to 20 MAY 2021

NE-2, 22 APR 2021 to 20 MAY 2021