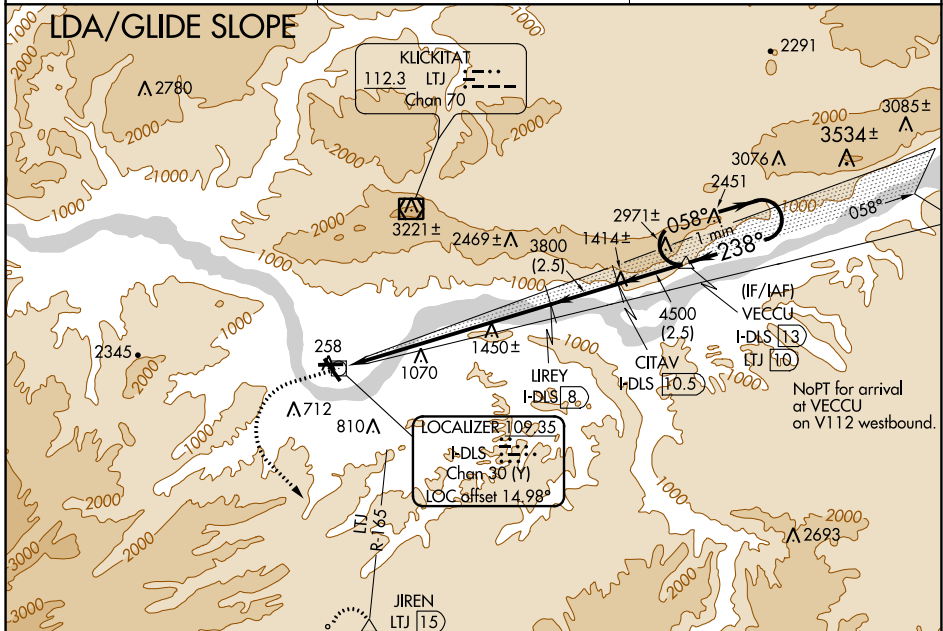


LOC/DME I-DLS 109.35 Chan 30 (Y)	APP CRS 238°	Rwy Idg TDZE 4451 243 Apt Elev 247
--	------------------------	---

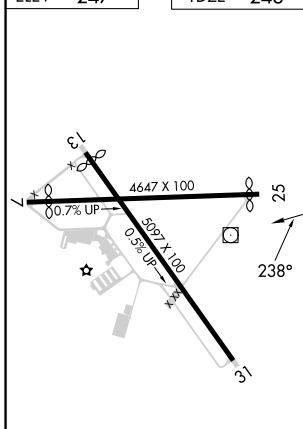
LDA/DME RWY 25
COLUMBIA GORGE RGNL/THE DALLES MUNI(DLS)

NA When local altimeter setting not received, procedure NA. Glide slope provided by standard glide slope equipment.	MISSED APPROACH: Climb to 1600 then climbing left turn to 7000 on heading 120° and LTJ VOR/DME R-165 to JIREN/LTJ 15 DME and hold, continue climb-in-hold to 7000.
--	---

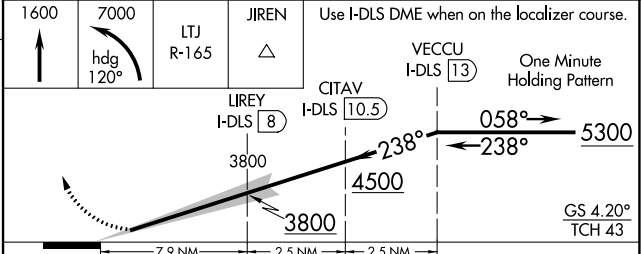
ASOS 135.175	SEATTLE CENTER 119.65 257.6	UNICOM 123.0 (CTAF) 0
------------------------	---------------------------------------	--



ELEV 247	TDZE 243
-----------------	-----------------



1600	7000	LTJ R-165	JIREN	Use I-DLS DME when on the localizer course.
↑	hdg 120°			VECCU I-DLS 13
		LIREY I-DLS 8	CITAV I-DLS 10.5	One Minute Holding Pattern



REIL Rwy 31 0* MIRL Rwy 7-25 and 13-31 0	CATEGORY	A	B	C	D
	S-LDA/GS 25	1368-3	1125 (1200-3)		NA

NW-1, 22 APR 2021 to 20 MAY 2021

NW-1, 22 APR 2021 to 20 MAY 2021