

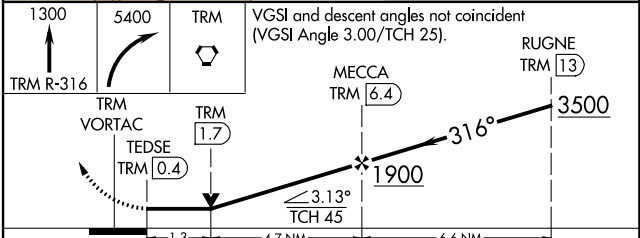
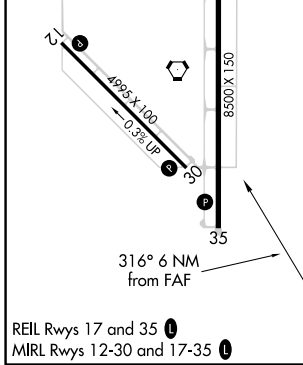
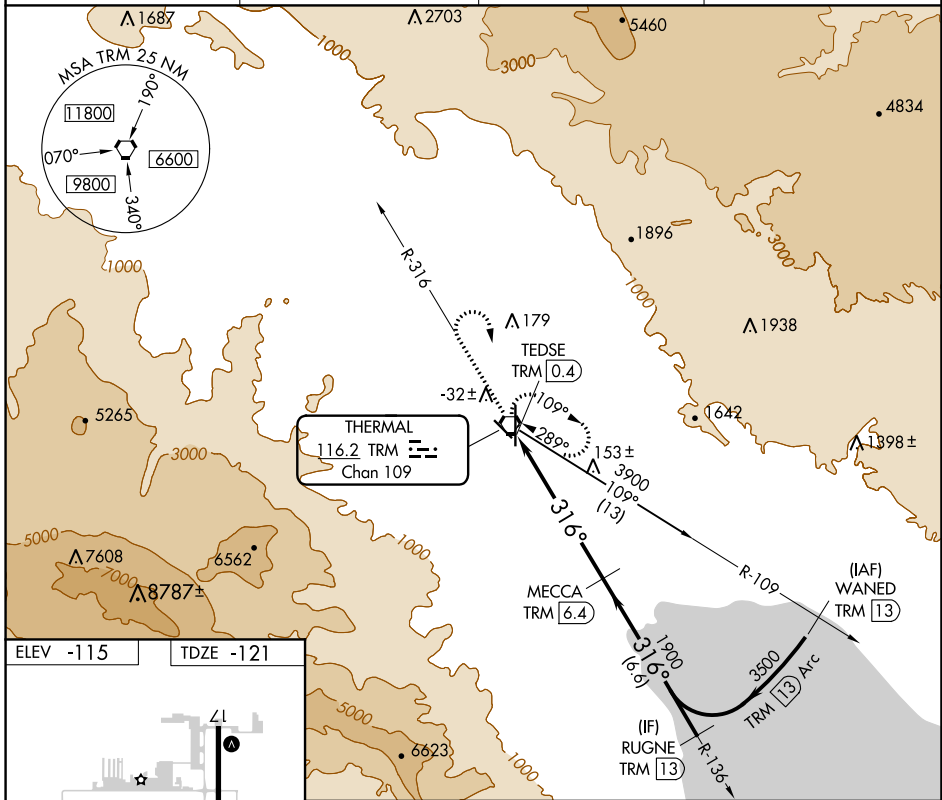
VORTAC TRM 116.2 Chan 109	APP CRS 316°	Rwy Idg TDZE -121 Apt Elev -115
---	------------------------	---

VOR RWY 30

JACQUELINE COCHRAN RGNL (TRM)

DME required.		MISSED APPROACH: Climb to 1300 on TRM VORTAC R-316 then climbing right turn to 5400 direct TRM VORTAC and hold, continue climb-in-hold to 5400.	
▼ ▲ Rwy 30 helicopter visibility reduction below ¾ SM NA.			

ASOS 118.325	SOCAL APP CON 135.275 251.1	CLNC DEL 120.225	UNICOM 123.0 (CTAF) 0
------------------------	---------------------------------------	----------------------------	---------------------------------



CATEGORY	A	B	C	D
S-30	300-1	421 (500-1)	300-1¼	421 (500-1¼)
CIRCLING	320-1 435 (500-1)	340-1 455 (500-1)	460-1½ 575 (600-1½)	780-3 895 (900-3)

SW-3, 22 APR 2021 to 20 MAY 2021

SW-3, 22 APR 2021 to 20 MAY 2021