

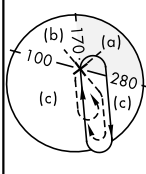
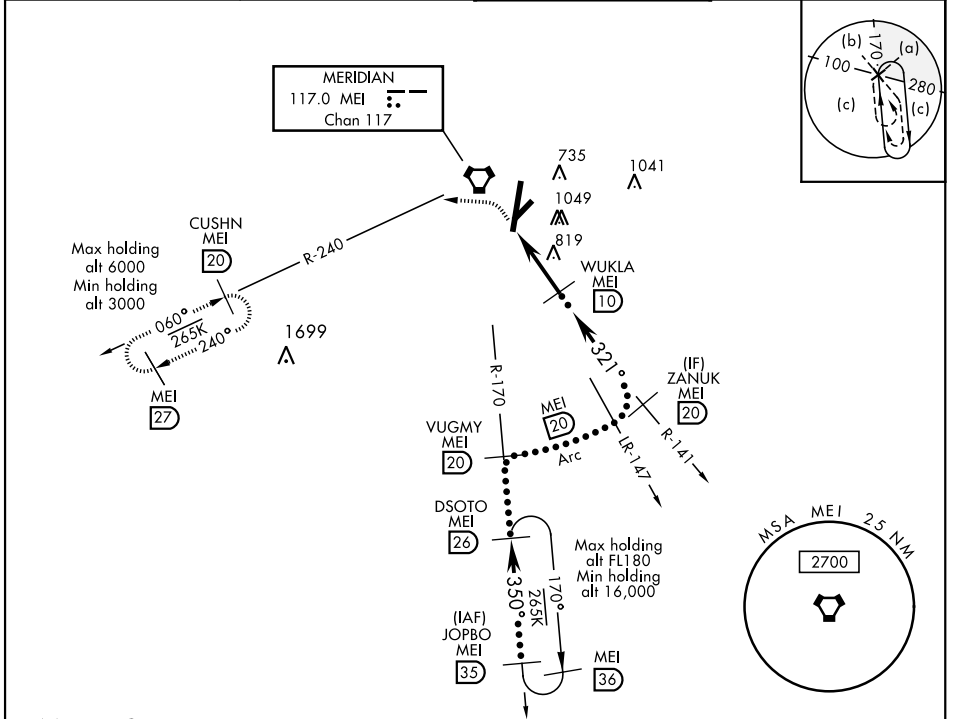
# HI-TACAN or VOR-B

VORTAC MEI <b>117.0</b> Chan <b>117</b>	APCH CRS <b>321°</b>	Rwy Idg TDZE Arpt Elev <b>N/A</b> <b>N/A</b> <b>298</b>	JAL-254 [USAF]	KEY FIELD (KMEI)
---	-------------------------	---	----------------	------------------

**MISSSED APPROACH:** Climbing left turn to 3000 on heading 270° and MEI VORTAC R-240 to CUSHN/ MEI 20 DME and hold.

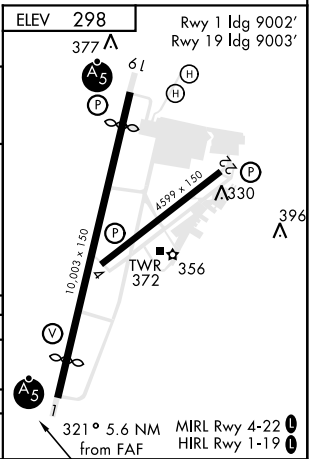
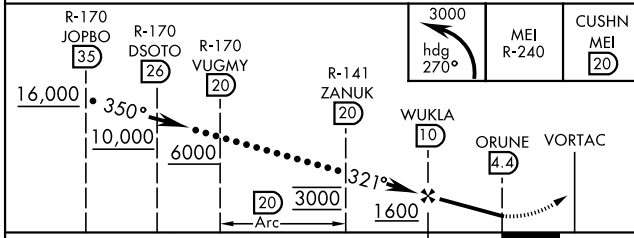
\* Circling to Rwy 22 NA at night. Circling NA SE of Rws 1 and 22.

ATIS <b>126.475 291.675</b>	MERIDIAN APP CON <b>120.5 269.325</b>	KEY TOWER ★ <b>133.975 (CTAF) 0 257.8</b>	GND CON <b>121.9 348.6</b>
--------------------------------	--	--	-------------------------------



## DME REQUIRED

EMERG SAFE ALT 100 NM 3700



CATEGORY	C	D	E
<b>CIRCLING*</b>	1140-2½ 842 (900-2½)	1140-2¾ 842 (900-2¾)	1140-3 842 (900-3)
HATTIESBURG-LAUREL RGNL ALTIMETER SETTING			
<b>CIRCLING*</b>	1280-3	982	(1000-3)

# HI-TACAN or VOR-B

SC-4, 22 APR 2021 to 20 MAY 2021

SC-4, 22 APR 2021 to 20 MAY 2021