

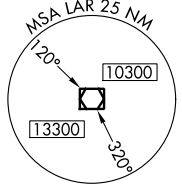
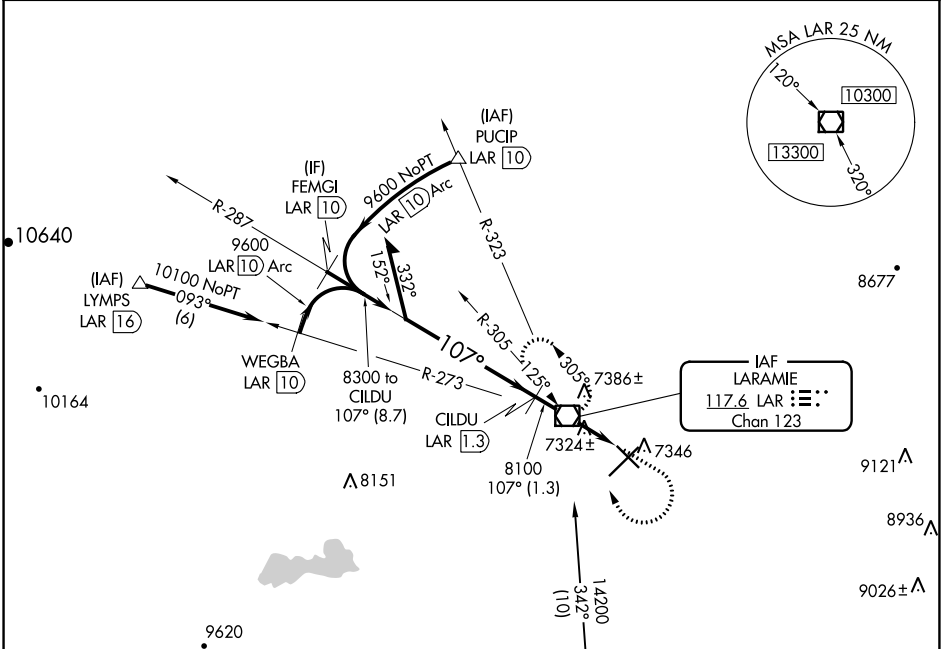
VOR/DME LAR <b>117.6</b> Chan 123	APP CRS <b>107°</b>	Rwy Idg TDZE Apt Elev	<b>6300</b> <b>7275</b> <b>7284</b>
---	------------------------	-----------------------------	---

# VOR/DME RWY 12

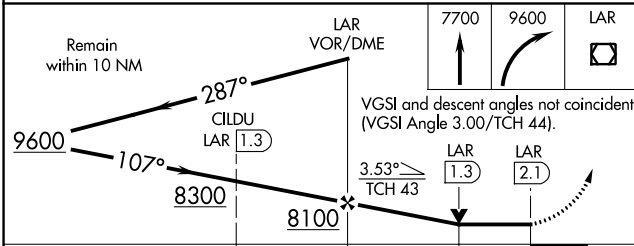
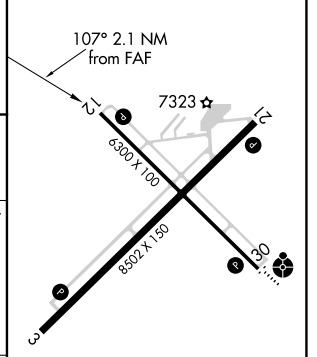
LARAMIE RGNL (L.A.R.)

-35°C	MISSED APPROACH: Climb to 7700 then climbing right turn to 9600 direct LAR VOR/DME and hold, continue climb-in-hold to 9600.	
-------	--	--

ASOS <b>135.475</b>	DENVER CENTER <b>125.9 284.7</b>	UNICOM <b>123.05 (CTAF)</b>
------------------------	-------------------------------------	--------------------------------



ELEV 7284		TDZE 7275
-----------	--	-----------



CATEGORY	A	B	C	D
S-12	7580-1 305 (300-1)			
CIRCLING	7660-1 376 (400-1)	7740-1 456 (500-1)	7740-1½ 456 (500-1½)	7840-2 556 (600-2)

REIL Rwy 3, 12 and 21
MIRL Rwy 3-21 and 12-30

NW-1, 22 APR 2021 to 20 MAY 2021

NW-1, 22 APR 2021 to 20 MAY 2021