

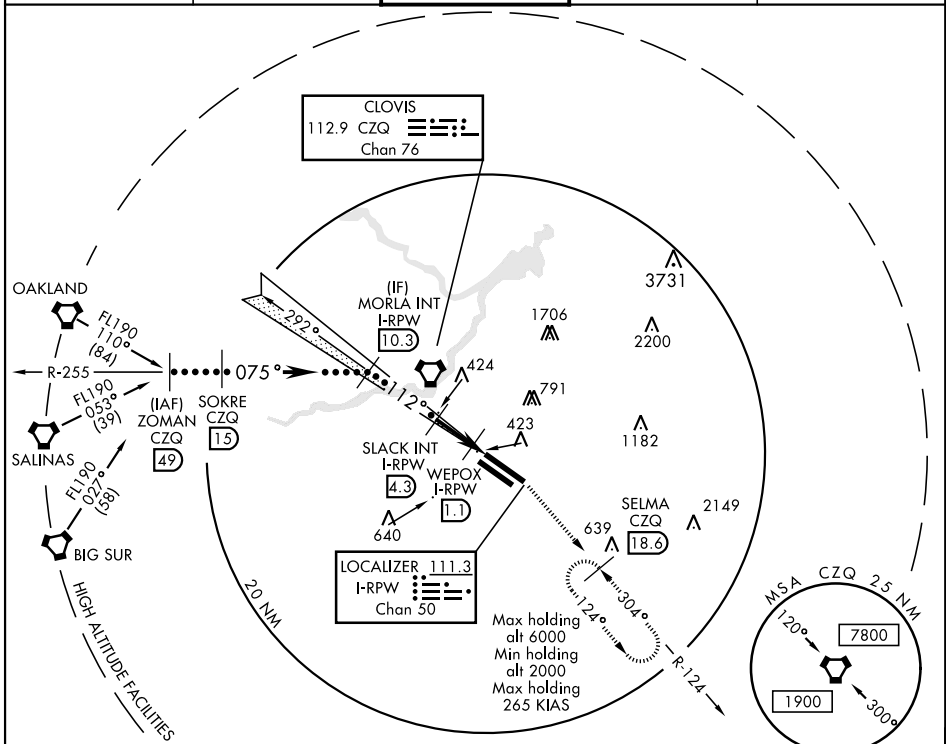
# HI-LOC Z RWY 11L

LOC/DME I-RPW <b>111.3</b> Chan <b>50</b>	APCH CRS <b>112°</b>	Rwy Idg 11L <b>9539</b> 11R <b>8008</b> TDZE 11L <b>336</b> 11R <b>333</b> Arprt Elev <b>336</b>
---	-------------------------	---

JAL-162 [USAF] FRESNO YOSEMITE INTL (KFAT)

**▽** MISSED APPROACH: Climb to 2000 on heading 112° and CZQ VORTAC R-124 to SELMA 18.6 DME and hold.

ATIS <b>121.35 273.6</b>	FRESNO APP CON <b>119.6 351.95</b>	FRESNO TOWER <b>118.2 251.1</b>	GND CON <b>121.7 348.6</b>	CLNC DEL <b>124.35 348.6</b>
-----------------------------	---------------------------------------	------------------------------------	-------------------------------	---------------------------------



SW-2, 22 APR 2021 to 20 MAY 2021

SW-2, 22 APR 2021 to 20 MAY 2021

## DME REQUIRED

EMERG SAFE ALT 100 NM 16,700

ZOMAN CZQ R-255 FL190 (49)	SOKRE CZQ (15)	MORLA INT I-RPW (10.3)	SLACK INT I-RPW (4.3)	WEPOX I-RPW (1.1)	I-RPW DME (0.2)	2000	SELMA CZQ R-124 (18.6)	ELEV 336	TDZE 11L 336 TDZE 11R 333
CATEGORY	C		D		E		112° 4.5 NM from FAF		
S-LOC 11L	680/55		344		(400-1¼)		Rwy 29R Idg 9227'		
SIDE STEP RWY 11R	680-1½ 347 (400-1½)		680-2		347 (400-2)		REIL Rwy 11L and 11R HIRL Rwy 11L-29R MIRL Rwy 11R-29L TDZL/CL Rwy 29R		
<b>C</b> CIRCLING	920-1½ 584 (600-1½)		920-2 584 (600-2)		1140-2¾ 804 (900-2¾)				

# HI-LOC Z RWY 11L