

| | | | |
|------------|---------|----------|------|
| VORTAC CEC | APP CRS | Rwy Idg | 5000 |
| 109.0 | 346° | TDZE | 59 |
| Chan 27 | | Apt Elev | 61 |

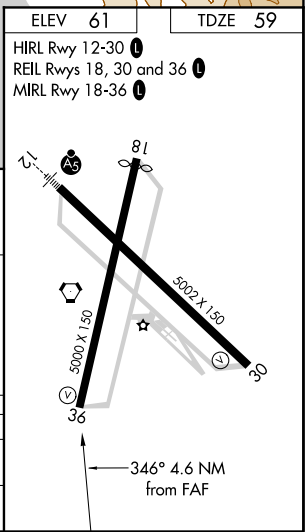
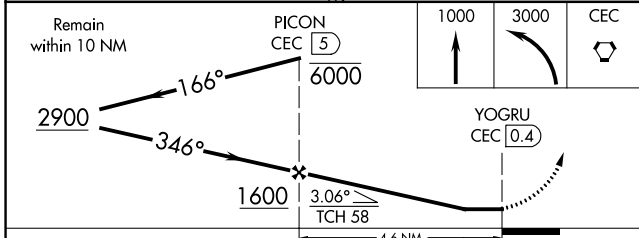
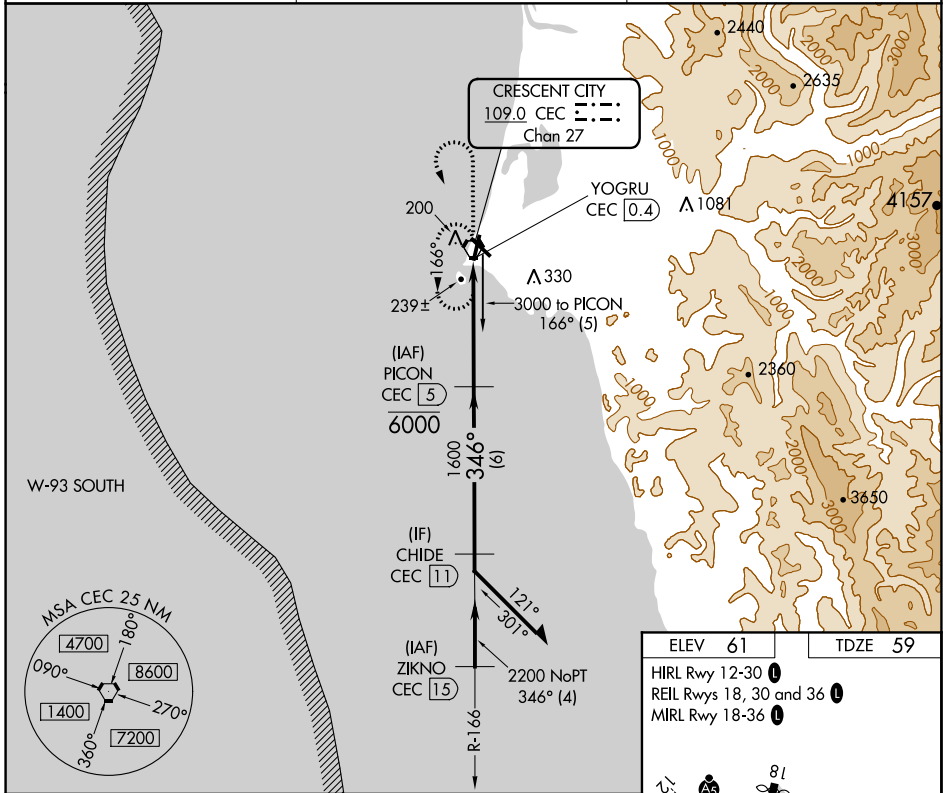
VOR/DME RWY 36

JACK MC NAMARA FIELD (CEC)

⚠ When local altimeter setting not received, use Brookings altimeter setting and increase all MDA 100 feet; increase S-36 Cat C/D and Circling Cat D visibilities ½ mile and Circling Cat C visibility ½ mile. Helicopter visibility reduction below 1 SM NA. Night landing: Rwy 36 operational VGSI required, remain on or above VGSI glidepath until threshold. Night landing: Rwy 18, 30 NA.

MISSED APPROACH: Climb to 1000 then climbing left turn to 3000 direct CEC VORTAC and hold, continue climb-in-hold to 3000.

| | | |
|------------------------|---------------------------------------|---------------------------------|
| ASOS 119.925 | SEATTLE CENTER 124.85 306.3 | UNICOM 122.8 (CTAF) 0 |
|------------------------|---------------------------------------|---------------------------------|



| CATEGORY | A | B | C | D |
|-------------------|-------|-------------|---|--|
| S-36 | 500-1 | 441 (500-1) | 500-1 ³ / ₈ | 441 (500-1 ³ / ₈) |
| C CIRCLING | 540-1 | 479 (500-1) | 640-1 ¹ / ₂ 579 (600-1 ¹ / ₂) | 640-2 579 (600-2) |

SW-2, 22 APR 2021 to 20 MAY 2021

SW-2, 22 APR 2021 to 20 MAY 2021