

WAAS CH <b>70735</b> <b>W11A</b>	APP CRS <b>111°</b>	Rwy Idg TDZE Apt Elev	<b>3998</b> <b>100</b> <b>100</b>
--	------------------------	-----------------------------	---

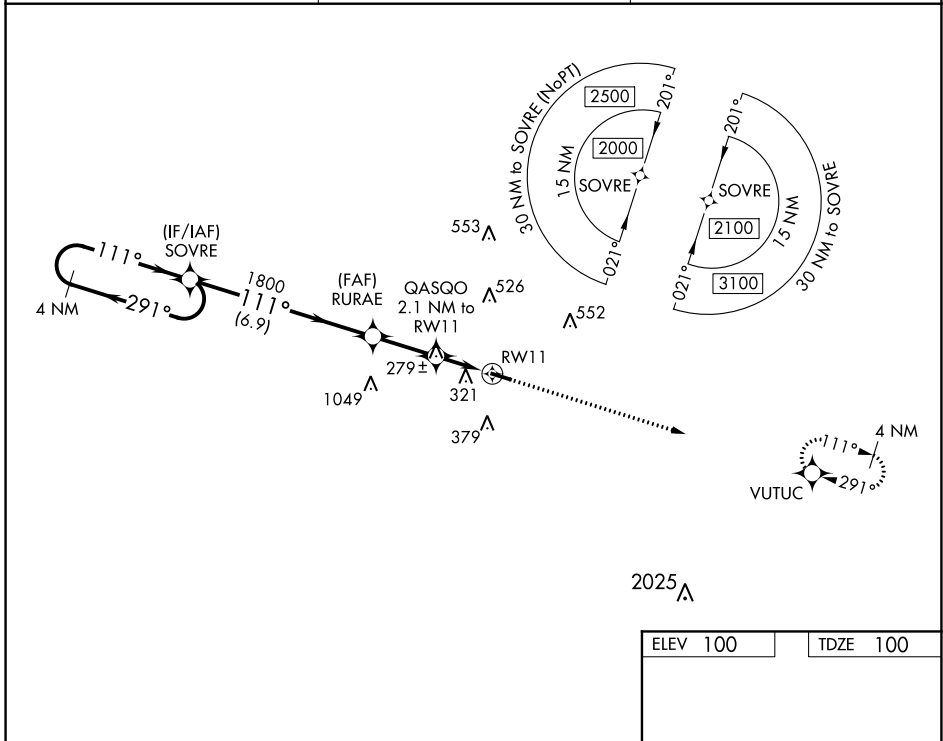
# RNAV (GPS) RWY 11

GENEVA MUNI (33J)

**▼** DME/DME RNP-0.3 NA. Procedure NA at night. Rwy 11 helicopter visibility reduction below 1 SM NA. Use Cairns AAF altimeter setting, when not received, use Dothan altimeter setting and increase all MDA 40 feet, increase LP and LNAV Cat C visibility  $\frac{1}{8}$  SM and Circling Cat C visibility  $\frac{1}{4}$  mile.

**▲ NA** MISSED APPROACH: Climb to 2000 direct VUTUC and hold.

KOZR AWOS-3 <b>111.2 316.15</b>	CAIRNS APP CON * <b>133.75 270.35</b>	UNICOM <b>122.8 (CTAF) 0</b>
------------------------------------	--	---------------------------------



SE-4, 25 MAR 2021 to 22 APR 2021

SE-4, 25 MAR 2021 to 22 APR 2021

4 NM Holding Pattern		2000		VUTUC	
SOVRE		RURAE		QASQO 2.1 NM to RW11	
1800		3.50° TCH 47		RW11	
6.9 NM		2.4 NM		2.1 NM	
CATEGORY	A	B	C	D	
LP MDA	600-1	500 (500-1)	600-1 $\frac{3}{8}$ 500 (500-1 $\frac{3}{8}$ )	NA	
LNAV MDA	640-1	540 (600-1)	640-1 $\frac{1}{2}$ 540 (600-1 $\frac{1}{2}$ )	NA	
<b>C</b> CIRCLING	700-1 600 (600-1)	720-1 620 (700-1)	900-2 $\frac{1}{4}$ 800 (800-2 $\frac{1}{4}$ )	NA	

MIRL Rwy 11-29 0