

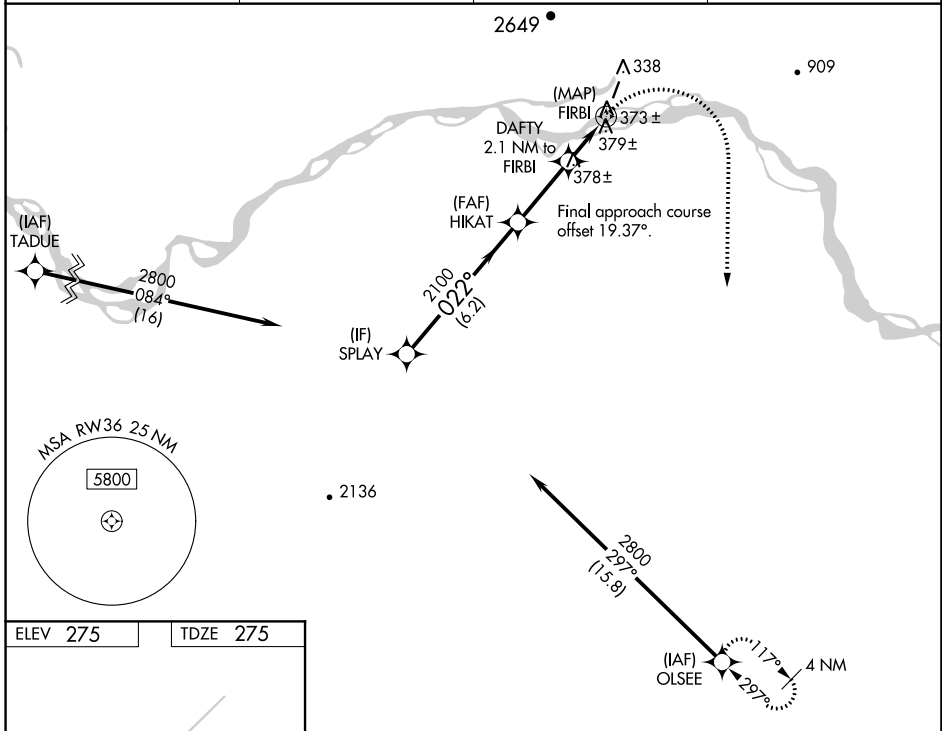
WAAS CH 63141 W36A	APP CRS 022°	Rwy Idg TDZE Apt Elev	3400 275 275
--	------------------------	-----------------------------	---

RNAV (GPS) RWY 36

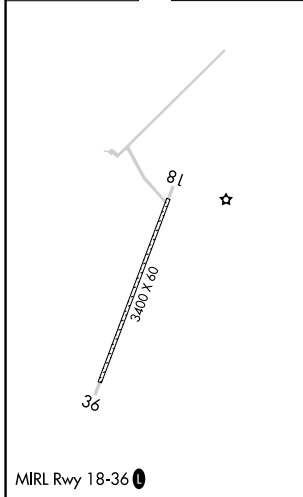
MANLEY HOT SPRINGS (MLY)(P.A.M.L)

RNP APCH.	<p>When Tanana altimeter setting not received, procedure NA.</p> <p>⚠ NA Circling NA west of Rwy 18-36. Rwy 36 helicopter visibility reduction below 3/4 SM NA. Procedure NA at night.</p> <p>🌃 -22°C</p>	MISSED APPROACH: Climbing right turn to 4400 direct OLSEE and hold.
-----------	---	---

TAL/PATA ASOS 135.1	ANCHORAGE CENTER 120.9 319.2	FAIRBANKS RADIO 122.3 122.65	UNICOM 122.8(CTAF) 0
-------------------------------	--	--	--------------------------------



ELEV 275	TDZE 275
----------	----------



SPLAY		HIKAT		DAFTY 2.1 NM to FIRBI		4400	OLSEE
2800		2100		1200			
022°		2.98° TCH 40					
6.2 NM		2.8 NM		2.1 NM		0.7 NM	
CATEGORY	A	B	C	D			
LP MDA	720-1	445 (500-1)	720-1 3/8	445 (500-1 3/8)			
LNAV MDA	1020-1 745 (800-1)	1020-1 1/4 745 (800-1 1/4)	1020-2 745 (800-2)	NA			
CIRCLING	1140-1 1/4 865 (900-1 1/4)	1280-1 1/4 1005 (1100-1 1/4)	1580-3 1305 (1400-3)	NA			

AK, 25 FEB 2021 to 22 APR 2021

AK, 25 FEB 2021 to 22 APR 2021