

WAAS CH 72729 W19A	APP CRS 188°	Rwy Idg TDZE Apt Elev	5144 237 237
--	------------------------	-----------------------------	---

RNAV (GPS) RWY 19

NORTH PICKENS (3M8)

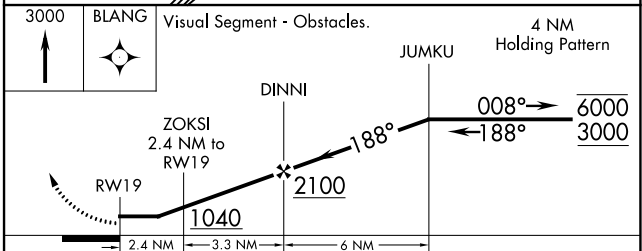
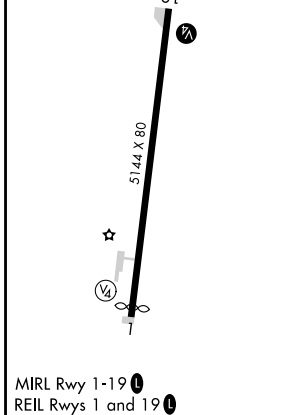
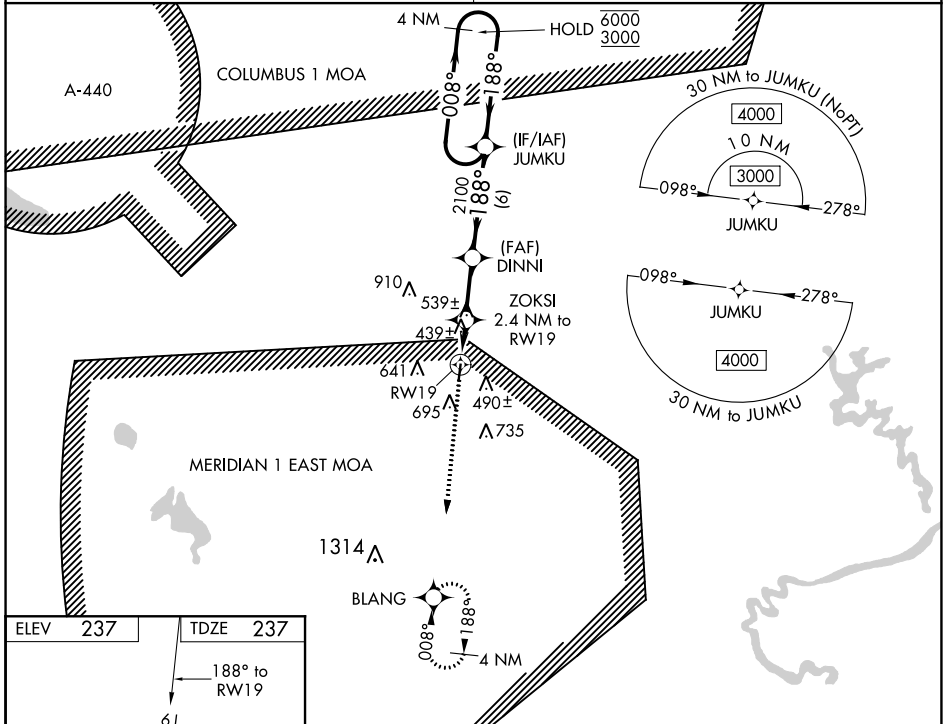
RNP APCH.

NA Procedure NA at night. Rwy 19 helicopter visibility reduction below 1 SM NA. Obtain local altimeter setting on CTAF; when not received, use Tuscaloosa altimeter setting and increase all MDAs 80 feet, increase visibility LP Cat C/D 1 1/4 SM and LNAV Cat C/D and Circling all Cats 1/4 SM.

MISSED APPROACH: Climb to 3000 direct BLANG and hold.

COLUMBUS APP CON ★
135.6 323.275

CTAF
122.9



CATEGORY	A	B	C	D
LP MDA	700-1	463 (500-1)	700-1 3/8	463 (500-1 3/8)
LNAV MDA	800-1	563 (600-1)	800-1 5/8	563 (600-1 5/8)
CIRCLING	1000-1	763 (800-1)	1000-2 1/4 763 (800-2 1/4)	1000-2 1/2 763 (800-2 1/2)

SE-4, 25 MAR 2021 to 22 APR 2021

SE-4, 25 MAR 2021 to 22 APR 2021