

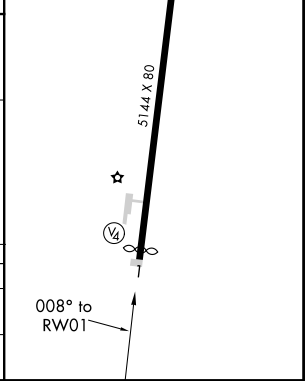
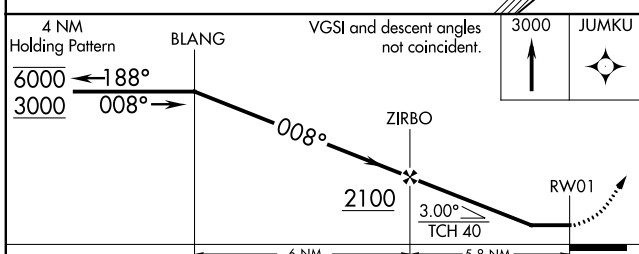
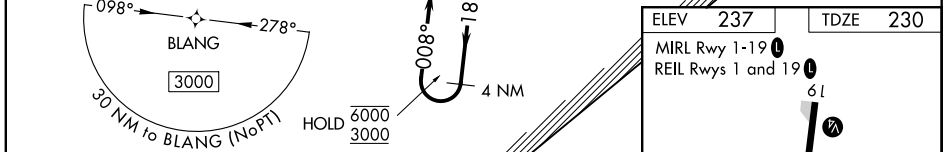
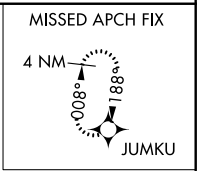
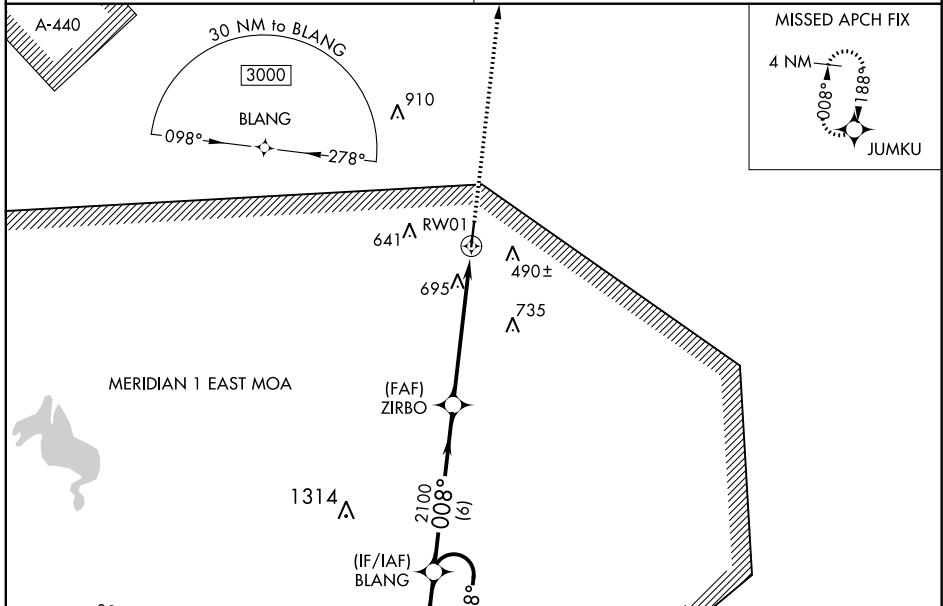
APP CRS	Rwy Idg	5006
008°	TDZE	230
	Apt Elev	237

RNAV (GPS) RWY 1

NORTH PICKENS (3M8)

RNP APCH.	<p>Procedure NA at night. Rwy 1 helicopter visibility reduction below 1 SM NA.</p> <p>Obtain local altimeter setting on CTAF; when not received, use Tuscaloosa altimeter setting and increase all MDAs 80 feet. Increase LNAV visibility Cat B ¼ SM and Cats C and D ½ SM. Increase Circling visibility all Cats ¼ SM.</p>	<p>MISSED APPROACH: Climb to 3000 direct JUMKU and hold.</p>
-----------	---	--

<p>COLUMBUS APP CON ★</p> <p>135.6 323,275</p>	<p>CTAF</p> <p>122.9</p>
---	---------------------------------



CATEGORY	A	B	C	D
LNAV MDA	960-1	730 (800-1)	960-2	730 (800-2)
CIRCLING	1000-1	763 (800-1)	1000-2¼ 763 (800-2¼)	1000-2½ 763 (800-2½)

SE-4, 25 MAR 2021 to 22 APR 2021

SE-4, 25 MAR 2021 to 22 APR 2021