

WAAS CH 86631 W25A	APP CRS 248°	Rwy Idg TDZE Apt Elev	4400 643 650
--	------------------------	-----------------------------	---

RNAV (GPS) RWY 25

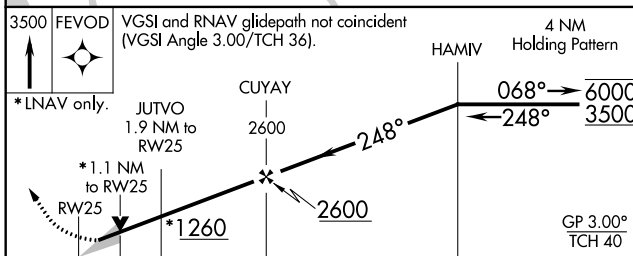
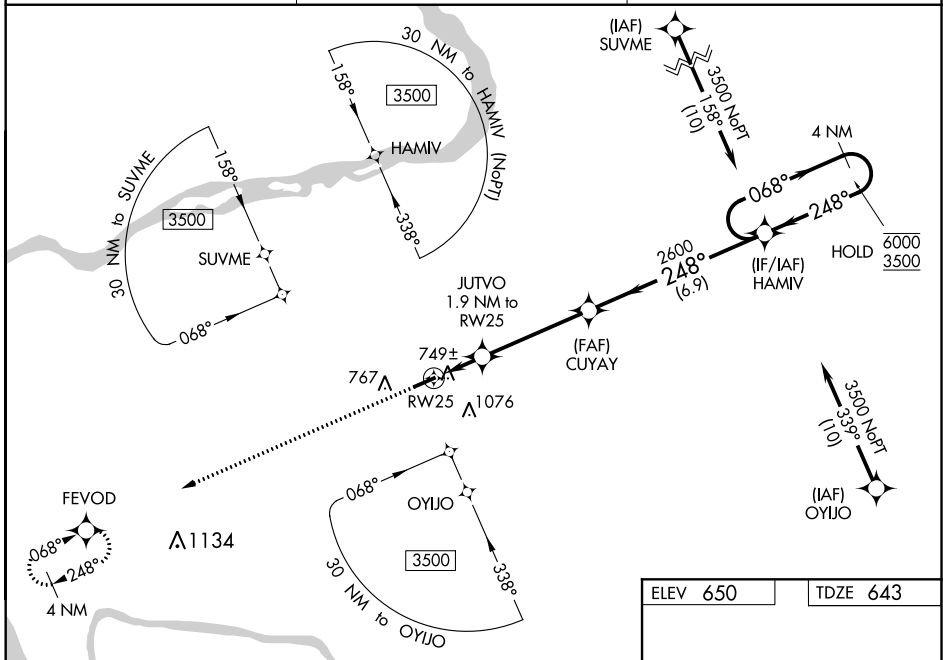
MARION-CRITTENDEN COUNTY JAMES C JOHNSON RGNL (5M9)

RNP APCH.

⚠ Circling Rwy 7 NA at night. Baro-VNAV and VDP NA when using Henderson altimeter setting.
⚠ For uncompensated Baro-VNAV systems, LNAV/VNAV NA below -16°C or above 54°C.
 When local altimeter setting not received, use Henderson altimeter setting and increase all DA 117 feet, increase all MDA 120 feet, increase all LPV and LNAV/VNAV visibility 3/8 SM and Circling Cat B visibility 1/4 SM.

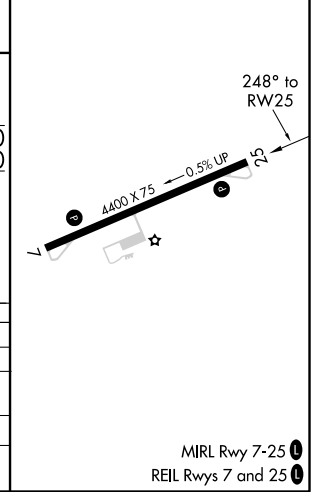
MISSED APPROACH:
Climb to 3500 direct FEVOD and hold.

AWOS-3P 118.15	MEMPHIS CENTER 133.65 292.15	CTAF 122.9
--------------------------	--	----------------------



ELEV 650	TDZE 643
----------	----------

CATEGORY	A	B	C	D
LPV DA		893-7/8	250 (300-7/8)	
LNAV/VNAV DA		945-1 1/8	302 (300-1 1/8)	
LNAV MDA		1000-1	357 (400-1)	
C CIRCLING	1180-1 530 (600-1)	1360-1 710 (800-1)	1380-1 1/2 730 (800-1 1/2)	1380-2 1/4 730 (800-2 1/4)



RNAV (GPS) RWY 25

MIRL Rwy 7-25
REIL Rwy 7 and 25

SE-1, 25 MAR 2021 to 22 APR 2021

SE-1, 25 MAR 2021 to 22 APR 2021