

| | |
|------------------------|------------------------|
| APP CRS 274° | Rwy Idg 3499 |
| | TDZE 969 |
| | Apt Elev 969 |

RNAV (GPS) RWY 28

LAKEVIEW-GRIFFITH FIELD (13C)

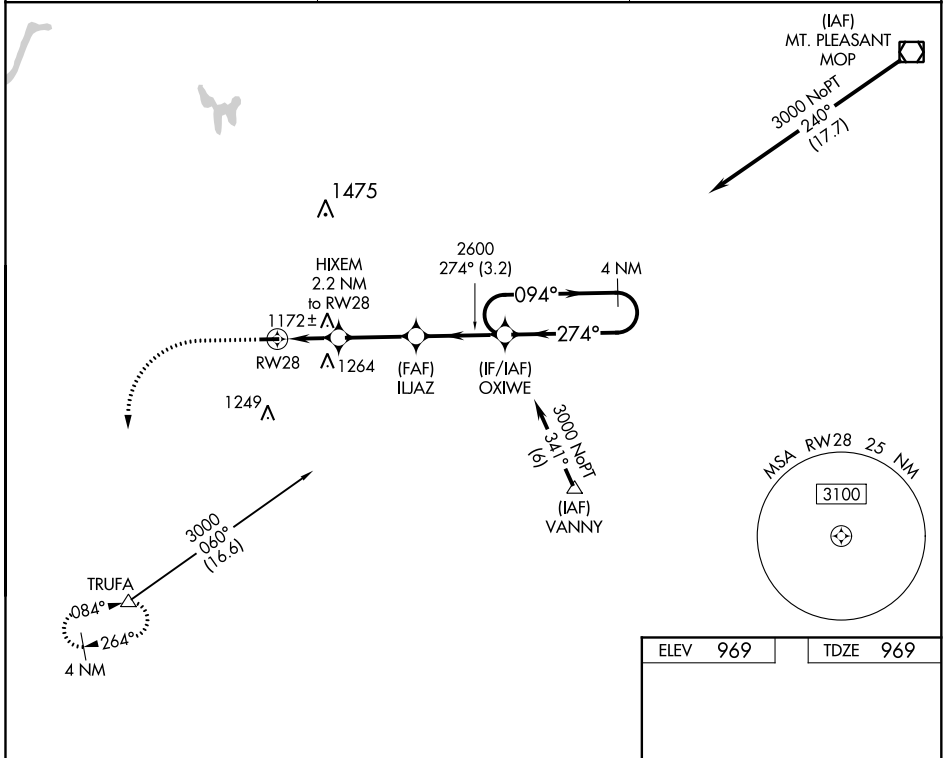
NA Use Big Rapids altimeter setting; when not received, use Mount Pleasant altimeter setting and increase all MDA 40 ft. DME/DME RNP-0.3 NA. Procedure NA at night. Helicopter visibility reduction below 1 SM NA.

MISSED APPROACH: Climb to 1800 then climbing left turn to 3000 direct TRUFA and hold.

RQB AWOS-3P
125.875

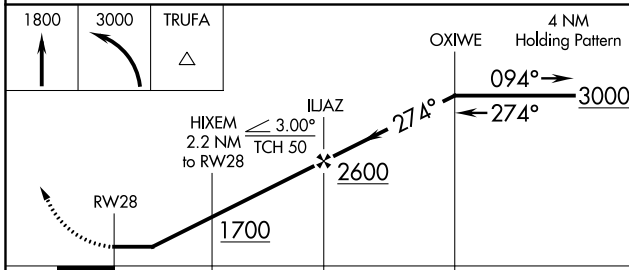
GREAT LAKES APP CON *
124.6 257.6

UNICOM
122.8 (CTAF) 0



EC-1, 25 MAR 2021 to 22 APR 2021

EC-1, 25 MAR 2021 to 22 APR 2021



| | | | |
|------|-----|------|-----|
| ELEV | 969 | TDZE | 969 |
|------|-----|------|-----|

| CATEGORY | A | B | C | D |
|-------------------|-----------------------|-----------------------|----|---|
| LNAV MDA | 1480-1 | 511 (600-1) | NA | |
| C CIRCLING | 1480-1 511 (600-1) | 1580-1 611 (700-1) | NA | |

