

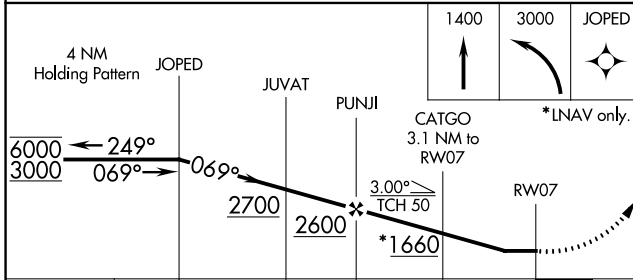
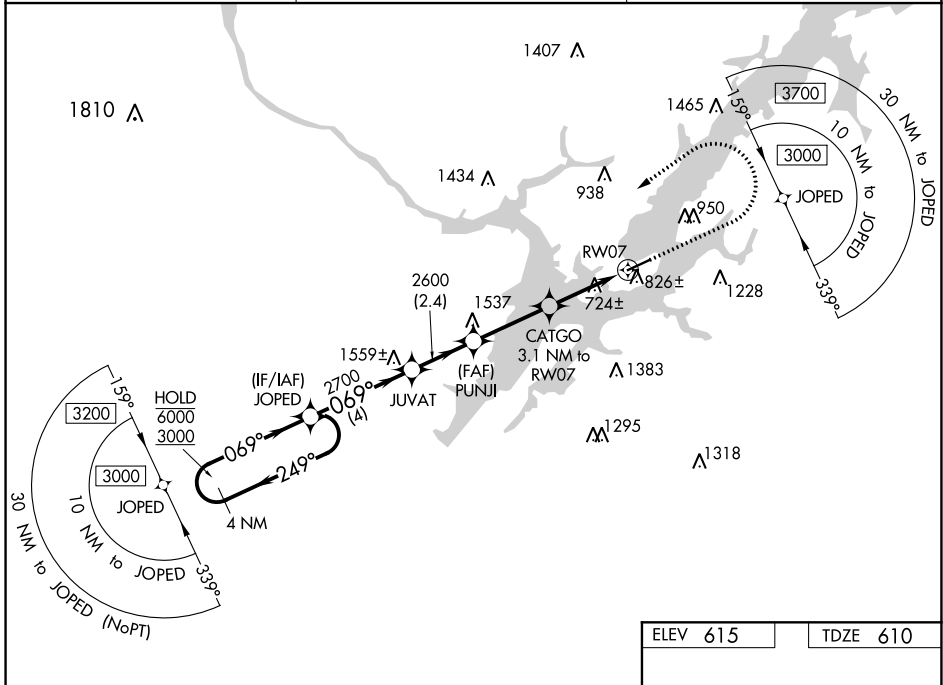
WAAS CH <b>90340</b> <b>W07A</b>	APP CRS <b>069°</b>	Rwy Idg <b>5005</b> TDZE <b>610</b> Apt Elev <b>615</b>
--	------------------------	---

# RNAV (GPS) RWY 7

GUNTERSVILLE MUNI-JOE STARNES FIELD (8A.1)

RNP APCH.	<p><b>▽</b> Circling NA to Rws 6 and 24. Rwy 7 helicopter visibility reduction below 1 SM NA. Use Scottsboro altimeter setting. Straight-in Rwy 7 NA at night, Circling Rwy 7 NA at night.</p> <p><b>▲</b> NA</p>	<p>MISSED APPROACH: Climb to 1400 then climbing left turn to 3000 direct JOPED and hold.</p>
-----------	---	--

4A6 AWOS-3PT <b>120.125</b>	HUNTSVILLE APP CON ★ <b>125.6 354.1</b>	UNICOM <b>122.8 (CTAF) 0</b>
--------------------------------	--	---------------------------------



ELEV 615	TDZE 610
----------	----------

CATEGORY	A	B	C	D
LP MDA	1040-1	430 (500-1)	1040-1¼	430 (500-1¼)
RNAV MDA	1140-1	530 (600-1)	1140-1½	530 (600-1½)
<b>☐</b> CIRCLING	1360-1 745 (800-1)	1380-1 765 (800-1)	1620-3 1005 (1100-3)	1840-3 1225 (1300-3)

REL Rwy 7 and 25 **0**  
MRL Rwy 7-25 **0**

SE-4, 25 MAR 2021 to 22 APR 2021

SE-4, 25 MAR 2021 to 22 APR 2021