

APP CRS	Rwy Idg	3219
184°	TDZE	19
	Apt Elev	21

RNAV (GPS) RWY 18

TAMPA EXECUTIVE (VDF)

RNP APCH.

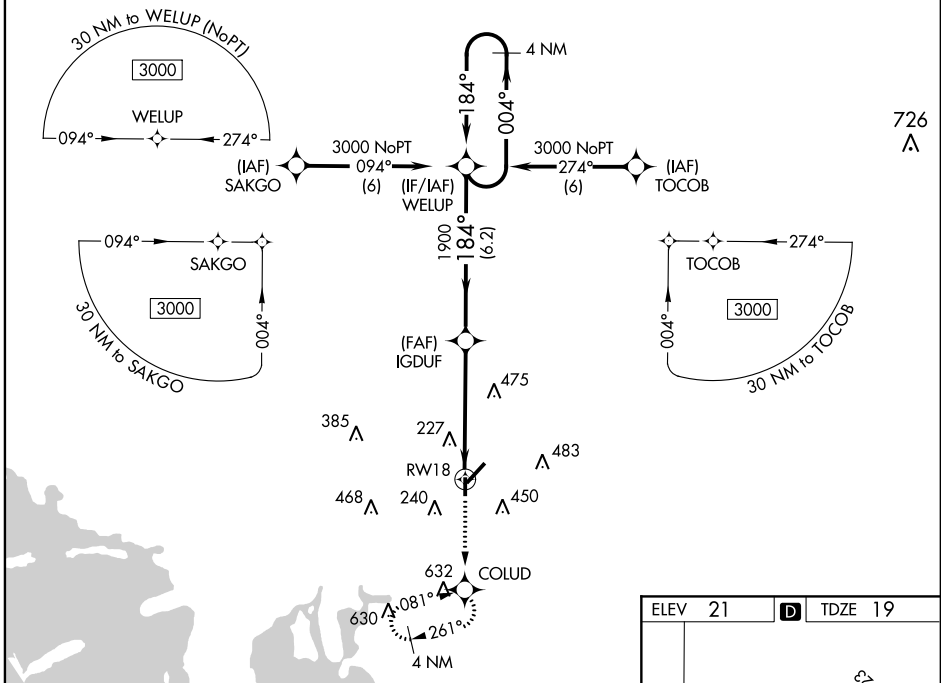
⚠ When local altimeter not received, use Tampa Intl altimeter setting and increase all MDA 40 feet. Straight-in Rwy 18 NA at night, Circling Rwy 18, 36 NA at night. Rwy 18 helicopter visibility reduction below 1 SM NA.

MISSED APPROACH: Climb to 3000 direct COLUD and hold, continue climb-in-hold to 3000.

AWOS-3
121.125

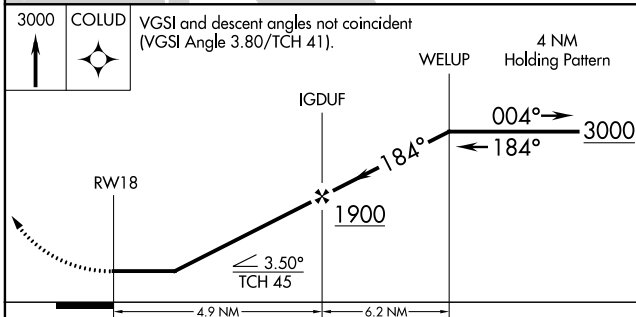
TAMPA APP CON
119.9 290.3

UNICOM
122.7 (CTAF) 0



SE-3, 25 MAR 2021 to 22 APR 2021

SE-3, 25 MAR 2021 to 22 APR 2021



ELEV	21	TDZE	19
------	-----------	------	-----------

3D perspective diagram of the RWY 18 approach. Key elements include:

- Final Approach:** 1900 heading 184° to RWY 18.
- WELUP Holding Pattern:** 3000 x 100 holding pattern at 3000, heading 004°.
- COLUD:** 632 heading 081° from RWY 18.
- Obstacles:** 475, 483, 450, 240, 632.

CATEGORY	A	B	C	D
LNAV MDA	580-1	561 (600-1)		NA
C CIRCLING	580-1 559 (600-1)	760-1 739 (800-1)		NA

REIL Rwy 5, 18, and 36
MIRL Rwy 5-23 and 18-36