

RNAV (GPS) RWY 33

NEBRASKA CITY MUNI (AFK)

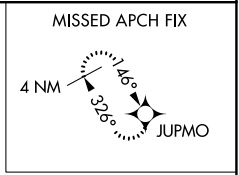
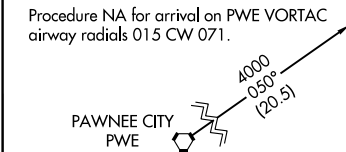
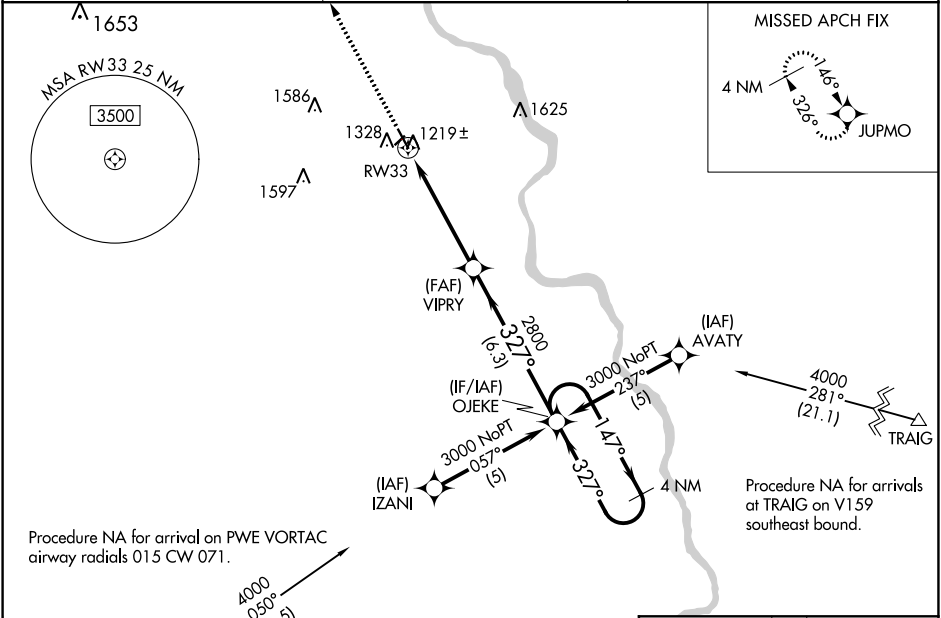
WAAS CH 45707 W33A	APP CRS 327°	Rwy Idg 4501 TDZE 1162 Apt Elev 1165
--	------------------------	---

RNP APCH.

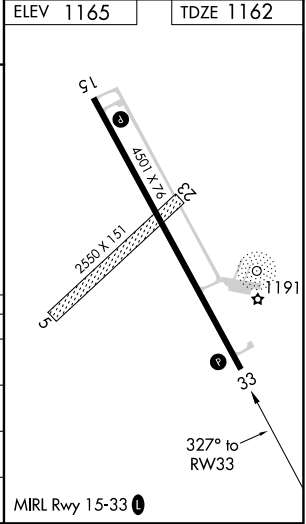
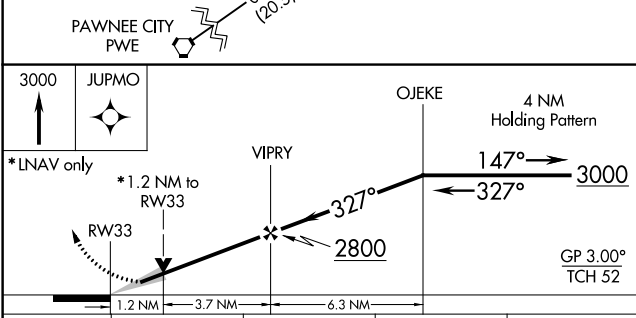
▼ For uncompensated Baro-VNAV systems, LNAV/VNAV NA below -17°C or above 54°C. When local altimeter setting not received, use Omaha altimeter setting and increase all DA 122 feet and all MDA 140 feet, and increase LPV Cat A/B visibility ¼ SM and LNAV/VNAV Cat A/B visibility ½ SM.

MISSED APPROACH: Climb to 3000 direct JUPMO and hold.

AWOS-3PT 128.325	OMAHA APP CON 120.1 354.05	UNICOM 122.7 (CTAF)
----------------------------	--------------------------------------	-------------------------------



Procedure NA for arrivals at TRAIG on V159 southeast bound.



CATEGORY	A	B	C	D
LPV DA	1412-1	250 (300-1)		NA
LNAV/VNAV DA	1526-1¼	364 (400-1¼)		NA
LNAV MDA	1600-1	438 (500-1)		NA
C CIRCLING	1640-1	475 (500-1)		NA

MIRL Rwy 15-33

NC-2, 25 MAR 2021 to 22 APR 2021

NC-2, 25 MAR 2021 to 22 APR 2021