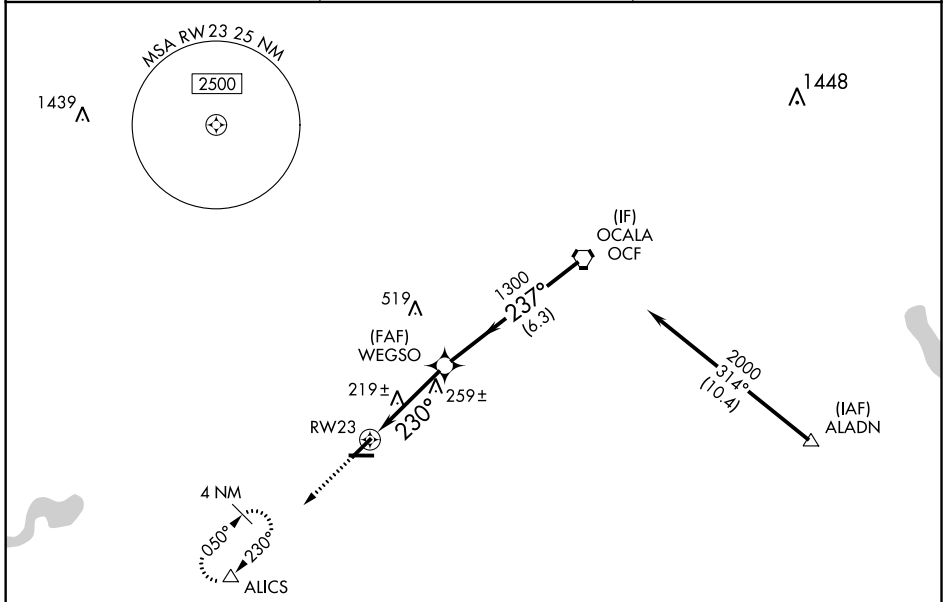


WAAS CH 48828 W23A	APP CRS 230°	Rwy Idg 5000 TDZE 65 Apt Elev 65
--	------------------------	---

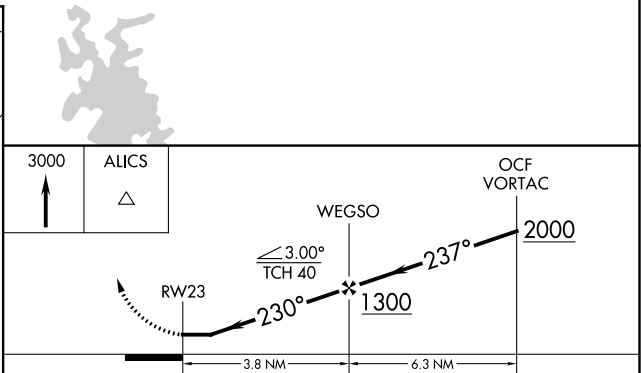
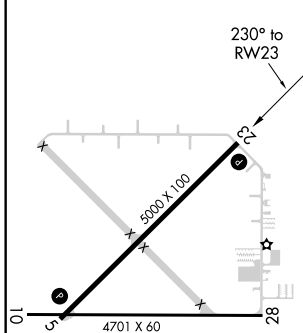
RNAV (GPS) RWY 23

MARION COUNTY (X35)

RNP APCH.		MISSED APPROACH: Climb to 3000 direct ALICS and hold, continue climb-in-hold to 3000.
<p>▼ ▲ NA</p> <p>Rwy 23 helicopter visibility reduction below 1 SM NA. Use Ocala altimeter setting; when not received, use Leesburg altimeter setting and increase all MDAs 60 feet and increase LP and LNAV Cats C and D visibility 1/8 SM. Procedure NA at night.</p>		
OCF AWOS-3PT 128.125	JACKSONVILLE APP CON 118.6 251.15	UNICOM 122.8 (CTAF) 0



ELEV 65	TDZE 65
---------	---------



CATEGORY	A	B	C	D
LP MDA	500-1	435 (500-1)	500-1¼	435 (500-1¼)
LNAV MDA	540-1	475 (500-1)	540-1¾	475 (500-1¾)
CIRCLING	540-1 475 (500-1)	560-1 495 (500-1)	560-1½ 495 (500-1½)	620-2 555 (600-2)

SE-3, 25 MAR 2021 to 22 APR 2021

SE-3, 25 MAR 2021 to 22 APR 2021